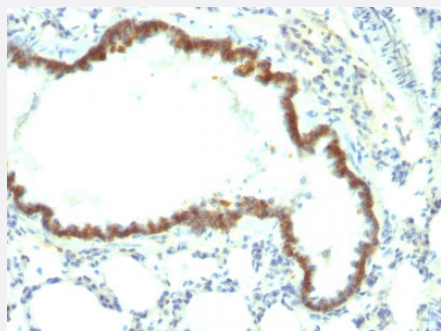


Tacstd1 monoclonal antibody, clone Epcam/1158

Catalog # MAB14196 Size 500 uL

Applications



Immunohistochemistry (Formalin/PFA-fixed paraffin-embedded sections)

Immunohistochemical staining (Formalin-fixed paraffin-embedded sections) of rat lung tissue with Tacstd1 monoclonal antibody, clone Epcam/1158 (Cat # MAB14196).



Immunohistochemistry (Formalin/PFA-fixed paraffin-embedded sections)

Immunohistochemical staining (Formalin-fixed paraffin-embedded sections) of rat colon tissue with Tacstd1 monoclonal antibody, clone Epcam/1158 (Cat # MAB14196).

Specification

| | |
|----------------------|---|
| Product Description | Mouse monoclonal antibody raised against full length recombinant rat Tacstd1. |
| Immunogen | Recombinant protein corresponding to full length rat Tacstd1. |
| Host | Mouse |
| Theoretical MW (kDa) | 40-43 |
| Reactivity | Rat |
| Form | Liquid |
| Isotype | IgG1 |

| | |
|----------------------------|--|
| Recommend Usage | Flow Cytometry (5-10 uL/million cells in 0.1 mL) Immunofluorescence (1:50-1:100) Immunohistochemistry (Formalin/PFA-fixed paraffin-embedded sections) (1:50-1:100) Western Blot (1:100-1:200) The optimal working dilution should be determined by the end user. |
| Storage Buffer | In bioreactor concentrate (0.05% sodium azide). |
| Storage Instruction | Store at 4°C. |
| Note | This product contains sodium azide: a POISONOUS AND HAZARDOUS SUBSTANCE which should be handled by trained staff only. |

Applications

- Western Blot
- Immunohistochemistry (Formalin/PFA-fixed paraffin-embedded sections)
Immunohistochemical staining (Formalin-fixed paraffin-embedded sections) of rat lung tissue with Tacstd1 monoclonal antibody, clone Epcam/1158 (Cat # MAB14196).
- Immunohistochemistry (Formalin/PFA-fixed paraffin-embedded sections)
Immunohistochemical staining (Formalin-fixed paraffin-embedded sections) of rat colon tissue with Tacstd1 monoclonal antibody, clone Epcam/1158 (Cat # MAB14196).
- Immunofluorescence
- Flow Cytometry

Gene Info — Tacstd1

| | |
|---------------------------|--|
| Entrez GeneID | 171577 |
| Protein Accession# | O55159 |
| Gene Name | Tacstd1 |
| Gene Alias | Egp314 |
| Gene Description | tumor-associated calcium signal transducer 1 |
| Gene Ontology | Hyperlink |
| Other Designations | epithelial cell adhesion molecule |