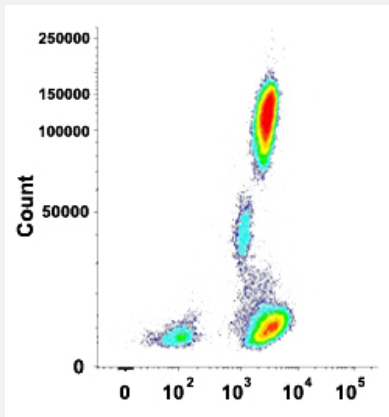


# SPN monoclonal antibody, clone TP1/36 (CF-Blue)

Catalog # MAB13920      Size 5 x 100 reactions

## Applications



### Flow Cytometry

Flow cytometric analysis of human normal whole blood with SPN monoclonal antibody, clone TP1/36 (CF-Blue) (Cat # MAB13920).

## Specification

**Product Description** Mouse monoclonal antibody raised against native human SPN.

**Immunogen** Native purified SPN from myeloblastic KG1 cells.

**Host** Mouse

**Theoretical MW (kDa)** 95-115

**Reactivity** Human

**Form** Liquid

**Conjugation** CF-Blue

**Purification** Protein A/G purification

**Purity** >90%

**Isotype** IgG1

|                     |  |
|---------------------|--|
| Recommend Usage     | Flow Cytometry (5 $\mu$ L/10 <sup>6</sup> cells)<br>The optimal working dilution should be determined by the end user. |
| Storage Buffer      | In PBS, pH 7.4 (protein stabilizer, 0.09% sodium azide).   |
| Storage Instruction | Store in the dark at 4°C. Avoid prolonged exposure to light.   |
| Note                | This product contains sodium azide: a POISONOUS AND HAZARDOUS SUBSTANCE which should be handled by trained staff only. |

## Applications

- Flow Cytometry

Flow cytometric analysis of human normal whole blood with SPN monoclonal antibody, clone TP1/36 (CF-Blue) (Cat # MAB13920).

## Gene Info — SPN

|                    |  |
|--------------------|--|
| Entrez GeneID      | <a href="#">6693</a>   |
| Protein Accession# | <a href="#">P16150</a>   |
| Gene Name          | SPN  |
| Gene Alias         | CD43, GPL115, LSN  |
| Gene Description   | sialophorin  |
| Omim ID            | <a href="#">182160</a>   |
| Gene Ontology      | <a href="#">Hyperlink</a>  |
| Gene Summary       | Sialophorin (leukosialin) is a major sialoglycoprotein on the surface of human T lymphocytes, monocytes, granulocytes, and some B lymphocytes, which appears to be important for immune function and may be part of a physiologic ligand-receptor complex involved in T-cell activation.[supplied by OMIM] |
| Other Designations | leukosialin sialophorin (gpL115, leukosialin, CD43) sialophorin (leukosialin, CD43)  |

## Pathway

- [Cell adhesion molecules \(CAMs\)](#)

## Disease

- [Kidney Failure](#)