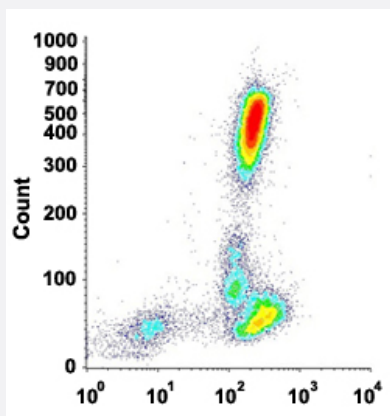


SPN monoclonal antibody, clone TP1/36 (FITC)

Catalog # MAB13915 Size 5 x 100 reactions

Applications



Flow Cytometry

Flow cytometric analysis of human peripheral blood leukocytes with SPN monoclonal antibody, clone TP1/36 (FITC) (Cat # MAB13915).

Specification

Product Description Mouse monoclonal antibody raised against native human SPN.

Immunogen Native purified SPN from myeloblastic KG1 cells.

Host Mouse

Theoretical MW (kDa) 95-115

Reactivity Human

Form Liquid

Conjugation FITC

Purification Protein A/G purification

Purity >90%

Isotype IgG1

Recommend Usage	Flow Cytometry (20 uL/10 ⁶ cells) The optimal working dilution should be determined by the end user.
Storage Buffer	In PBS, pH 7.4 (protein stabilizer, 0.09% sodium azide).
Storage Instruction	Store in the dark at 4°C. Avoid prolonged exposure to light.
Note	This product contains sodium azide: a POISONOUS AND HAZARDOUS SUBSTANCE which should be handled by trained staff only.

Applications

- Flow Cytometry

Flow cytometric analysis of human peripheral blood leukocytes with SPN monoclonal antibody, clone TP1/36 (FITC) (Cat # MAB13915).

Gene Info — SPN

Entrez GeneID	6693
Protein Accession#	P16150
Gene Name	SPN
Gene Alias	CD43, GPL115, LSN
Gene Description	sialophorin
Omim ID	182160
Gene Ontology	Hyperlink
Gene Summary	Sialophorin (leukosialin) is a major sialoglycoprotein on the surface of human T lymphocytes, monocytes, granulocytes, and some B lymphocytes, which appears to be important for immune function and may be part of a physiologic ligand-receptor complex involved in T-cell activation.[supplied by OMIM]
Other Designations	leukosialin sialophorin (gpL115, leukosialin, CD43) sialophorin (leukosialin, CD43)

Pathway

- [Cell adhesion molecules \(CAMs\)](#)

Disease

- [Kidney Failure](#)