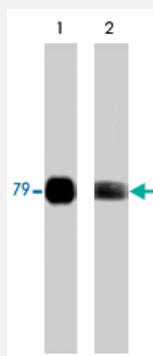


Prkcq monoclonal antibody, clone M217

Catalog # MAB1389

Size 100 uL

Applications



Western Blot (Cell lysate)

Western blot analysis of Prkcq in human Jurkat cell lysate. The blot was probed with Prkcq monoclonal antibody, clone M217 (Cat # MAB1389) at 1:250 (lane 1) and 1:1000 (lane 2).

Specification

Product Description	Mouse monoclonal antibody raised against partial recombinant Prkcq.
Immunogen	Recombinant protein corresponding to N-terminus of mouse Prkcq.
Host	Mouse
Reactivity	Human, Mouse, Rat
Specificity	This sequence is conserved in human and rat PKCq, and has low homology to other PKC family members.
Form	Liquid
Isotype	IgG2a
Quality Control Testing	Antibody Reactive Against Recombinant Protein.
Recommend Usage	ELISA (1:2000) Western Blot (1:500) The optimal working dilution should be determined by the end user.
Storage Buffer	In PBS (50% glycerol, 1 mg/mL BSA, 0.05% sodium azide)

Storage Instruction

Store at -20°C.
Aliquot to avoid repeated freezing and thawing.

Note

This product contains sodium azide: a POISONOUS AND HAZARDOUS SUBSTANCE which should be handled by trained staff only.

Applications

- Western Blot (Cell lysate)

Western blot analysis of Prkcq in human Jurkat cell lysate. The blot was probed with Prkcq monoclonal antibody, clone M217 (Cat # MAB1389) at 1:250 (lane 1) and 1:1000 (lane 2).

- Enzyme-linked Immunoabsorbent Assay

Gene Info — Prkcq

Entrez GeneID[18761](#)**Gene Name**

Prkcq

Gene Alias

A130035A12Rik, AW494342, PKC-0, PKC-theta, PKCtheta, Pkcq

Gene Description

protein kinase C, theta

Gene Ontology[Hyperlink](#)**Gene Summary**

O

Other Designations

OTTMUSP00000012133|PKC theta

Publication Reference

- [A Ras activation pathway dependent on Syk phosphorylation of protein kinase C.](#)

Kawakami Y, Kitaura J, Yao L, McHenry RW, Kawakami Y, Newton AC, Kang S, Kato RM, Leitges M, Rawlings DJ, Kawakami T.

PNAS 2003 Aug; 100(16):9470.

- [The molecular heterogeneity of protein kinase C and its implications for cellular regulation.](#)

Nishizuka Y.

Nature 1988 Aug; 334(6184):661.

Application: IF, IHC, Rat, Rat cerebellar cortex