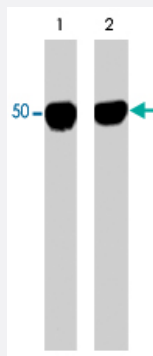


Brain tubulin monoclonal antibody, clone M154

Catalog # MAB1387

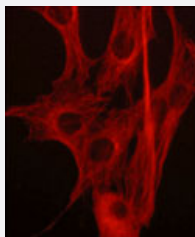
Size 100 uL

Applications



Western Blot (Tissue lysate)

Western blot analysis of purified human brain tubulin untreated (lane 1) or treated with ERK2 kinase to phosphorylate Ser-172 (lane 2). The blot was probed with Brain tubulin monoclonal antibody, clone M154 (Cat # MAB1387).



Immunofluorescence

Immunocytochemical labeling in C2C12 cells using Brain tubulin monoclonal antibody, clone M154 (Cat # MAB1387).

Specification

Product Description	Mouse monoclonal antibody raised against full length native brain tubulin.
Immunogen	Native purified tubulin from porcine brain.
Host	Mouse
Reactivity	Human, Mouse, Pig, Rat
Form	Liquid
Isotype	IgG1

Quality Control Testing	Antibody Reactive Against Native Purified Protein.
Recommend Usage	ELISA (1:2000) Immunocytochemistry (1:200) Western Blot (1:1000) The optimal working dilution should be determined by the end user.
Storage Buffer	In PBS (50% glycerol, 1 mg/mL BSA, 0.05% sodium azide)
Storage Instruction	Store at -20°C. Aliquot to avoid repeated freezing and thawing.
Note	This product contains sodium azide: a POISONOUS AND HAZARDOUS SUBSTANCE which should be handled by trained staff only.

Applications

- Western Blot (Tissue lysate)

Western blot analysis of purified human brain tubulin untreated (lane 1) or treated with ERK2 kinase to phosphorylate Ser-172 (lane 2). The blot was probed with Brain tubulin monoclonal antibody, clone M154 (Cat # MAB1387).

- Immunocytochemistry

- Immunofluorescence

Immunocytochemical labeling in C2C12 cells using Brain tubulin monoclonal antibody, clone M154 (Cat # MAB1387).

- Enzyme-linked Immunoabsorbent Assay

Publication Reference

- [Microtubule regulation in mitosis: tubulin phosphorylation by the cyclin-dependent kinase Cdk1.](#)

Fourest-Lieuvin A, Peris L, Gache V, Garcia-Saez I, Juillan-Binard C, Lantiez V, Job D.

Molecular Biology of the Cell 2005 Dec; 17(3):1041.

- [Post-translational modifications regulate microtubule function.](#)

Westermann S, Weber K.

Nature Reviews. Molecular Cell Biology 2003 Dec; 4(12):938.

- [Expression of unphosphorylated class III beta-tubulin isotype in neuroepithelial cells demonstrates neuroblast commitment and differentiation.](#)

Fanarraga ML, Avila J, Zabala JC.

The European Journal of Neuroscience 1999 Feb; 11(2):517.