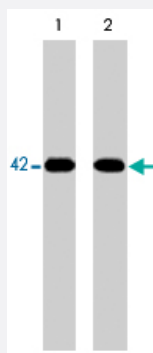


# Mapk14 monoclonal antibody, clone M138

Catalog # MAB1384

Size 100 uL

## Applications



### Western Blot (Cell lysate)

Western blot analysis of A-431 cells serum starved overnight (lane 1) or treated with pervanadate (1 mM) for 30 minutes (lane 2). The blot was probed with Mapk14 monoclonal antibody, clone M138 (Cat # MAB1384).

## Specification

**Product Description** Mouse monoclonal antibody raised against partial recombinant Mapk14.

**Immunogen** Recombinant protein corresponding to C-terminus of rat Mapk14.

**Host** Mouse

**Reactivity** Human, Mouse, Rat

**Specificity** This sequence is identical in human and mouse p38a.

**Form** Liquid

**Isotype** IgG1

**Quality Control Testing** Antibody Reactive Against Recombinant Protein.

**Recommend Usage**  
 ELISA (1:2000)  
 Immunocytochemistry (1:500)  
 Western Blot (1:1000)  
 The optimal working dilution should be determined by the end user.

**Storage Buffer** In PBS (50% glycerol, 1 mg/mL BSA, 0.05% sodium azide)

**Storage Instruction**

Store at -20°C.  
Aliquot to avoid repeated freezing and thawing.

**Note**

This product contains sodium azide: a POISONOUS AND HAZARDOUS SUBSTANCE which should be handled by trained staff only.

## Applications

- Western Blot (Cell lysate)

Western blot analysis of A-431 cells serum starved overnight (lane 1) or treated with pervanadate (1 mM) for 30 minutes (lane 2). The blot was probed with Mapk14 monoclonal antibody, clone M138 (Cat # MAB1384).

- Immunocytochemistry

- Enzyme-linked Immunoabsorbent Assay

## Gene Info — Mapk14

**Entrez GeneID**[81649](#)**Gene Name**

Mapk14

**Gene Alias**

CSBP, CSPB1, Csbp1, Csbp2, Exip, Hog, MGC105413, Mxi2, Prkm14, Prkm15, RK, Sapk2A, p38, p38Hog, p38alpha

**Gene Description**

mitogen activated protein kinase 14

**Gene Ontology**[Hyperlink](#)**Other Designations**

Csais binding protein|MAP kinase 2|MAP kinase Mxi2|MAX-interacting protein 2|cytokine suppressive anti-inflammatory drug binding protein|cytokine-suppressive anti-inflammatory drug binding protein|mitogen-activated protein kinase 14|p38 MAP kinase|p38 mit

## Publication Reference

- [Pro-inflammatory cytokines and environmental stress cause p38 mitogen-activated protein kinase activation by dual phosphorylation on tyrosine and threonine.](#)

Raingeaud J, Gupta S, Rogers JS, Dickens M, Han J, Ulevitch RJ, Davis RJ.

The Journal of Biological Chemistry 1995 Mar; 270(13):7420.

Application: IF, IP, WB-Ce, WB-Tr, Human, Monkey, COS, HeLa cells

- [Interleukin-1 activates a novel protein kinase cascade that results in the phosphorylation of Hsp27.](#)

Freshney NW, Rawlinson L, Guesdon F, Jones E, Cowley S, Hsuan J, Saklatvala J.

Cell 1994 Sep; 78(6):1039.

- [A novel kinase cascade triggered by stress and heat shock that stimulates MAPKAP kinase-2 and phosphorylation of the small heat shock proteins.](#)

Rouse J, Cohen P, Trigon S, Morange M, Alonso-Llamazares A, Zamanillo D, Hunt T, Nebreda AR.

Cell 1994 Sep; 78(6):1027.