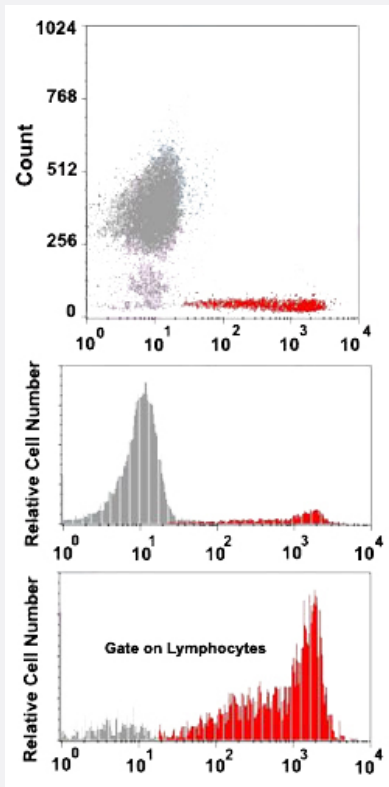


CD7 monoclonal antibody, clone HIT7 (PE)

Catalog # MAB13755 Size 5 x 100 reactions

Applications



Flow Cytometry

Flow cytometric analysis of human normal whole blood with CD7 monoclonal antibody, clone HIT7 (PE) (Cat # MAB13755).

Specification

Product Description	Mouse monoclonal antibody raised against human CD7.
Immunogen	PBMCs and tonsil cells.
Host	Mouse
Theoretical MW (kDa)	40
Reactivity	Human
Form	Liquid

Conjugation	PE
Purification	Protein A/G purification
Purity	>90%
Isotype	IgG1
Recommend Usage	Flow Cytometry (20 μ L/ 10^6 cells) The optimal working dilution should be determined by the end user.
Storage Buffer	In PBS, pH 7.4 (protein stabilizer, 0.09% sodium azide).
Storage Instruction	Store in the dark at 4°C. Avoid prolonged exposure to light.
Note	This product contains sodium azide: a POISONOUS AND HAZARDOUS SUBSTANCE which should be handled by trained staff only.

Applications

- Flow Cytometry

Flow cytometric analysis of human normal whole blood with CD7 monoclonal antibody, clone HIT7 (PE) (Cat # MAB13755).

Gene Info — CD7

Entrez GeneID	924
Protein Accession#	P09564
Gene Name	CD7
Gene Alias	GP40, LEU-9, TP41, Tp40
Gene Description	CD7 molecule
Omim ID	186820
Gene Ontology	Hyperlink
Gene Summary	This gene encodes a transmembrane protein which is a member of the immunoglobulin superfamily. This protein is found on thymocytes and mature T cells. It plays an essential role in T-cell interactions and also in T-cell/B-cell interaction during early lymphoid development. [provided by RefSeq]
Other Designations	CD7 antigen CD7 antigen (p41) T-cell antigen CD7 T-cell leukemia antigen p41 protein

Pathway

- [Hematopoietic cell lineage](#)