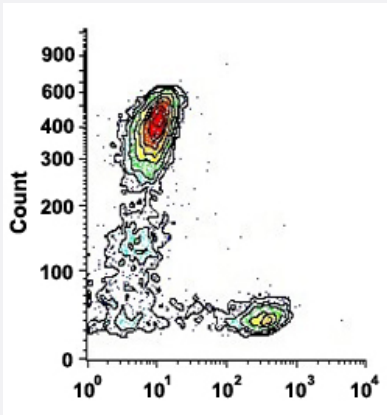


CD6 monoclonal antibody, clone MAE-1C10 (Biotin)

Catalog # MAB13751 Size 100 ug

Applications



Flow Cytometry

Flow cytometric analysis of human peripheral blood lymphocytes with CD6 monoclonal antibody, clone MAE-1C10 (Biotin) (Cat # MAB13751).

Specification

Product Description	Mouse monoclonal antibody raised against human CD6.
Immunogen	Human T cells blast.
Host	Mouse
Theoretical MW (kDa)	110-150
Reactivity	Human
Form	Liquid
Conjugation	Biotin
Purification	Protein A/G purification
Purity	>90%
Isotype	IgG1

Recommend Usage	Flow Cytometry (1 ug/10 ⁶ cells) The optimal working dilution should be determined by the end user.
Storage Buffer	In PBS, pH 7.4 (protein stabilizer, 0.09% sodium azide).
Storage Instruction	Store in the dark at 4°C. Avoid prolonged exposure to light.
Note	This product contains sodium azide: a POISONOUS AND HAZARDOUS SUBSTANCE which should be handled by trained staff only.

Applications

- Flow Cytometry

Flow cytometric analysis of human peripheral blood lymphocytes with CD6 monoclonal antibody, clone MAE-1C10 (Biotin) (Cat # MAB13751).

Gene Info — CD6

Entrez GeneID	923
Protein Accession#	P30203
Gene Name	CD6
Gene Alias	FLJ44171, TP120
Gene Description	CD6 molecule
Omim ID	186720
Gene Ontology	Hyperlink
Gene Summary	CD6 is a monomeric 105- or 130-kD membrane glycoprotein that is involved in T-cell activation. The size difference between the 2 CD6 forms is due to differences in phosphorylation (Robinson et al., 1995 [PubMed 7589069]).[supplied by OMIM]
Other Designations	CD6 antigen

Pathway

- [Cell adhesion molecules \(CAMs\)](#)

Disease

- [Genetic Predisposition to Disease](#)
- [Multiple Sclerosis](#)