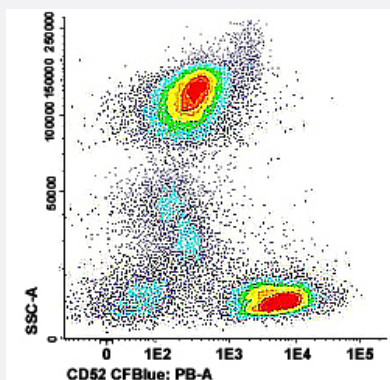


CD52 monoclonal antibody, clone HI186 (CF-Blue)

Catalog # MAB13704 Size 100 Reactions

Applications



Flow Cytometry

Flow cytometric analysis of human peripheral blood cells with CD52 monoclonal antibody, clone HI186 (CF-Blue) (Cat # MAB13704).

Specification

Product Description	Mouse monoclonal antibody raised against human CD52.
Immunogen	Human peripheral blood mononuclear cells and tonsil cells.
Host	Mouse
Theoretical MW (kDa)	25-29
Reactivity	Human
Form	Liquid
Conjugation	CF-Blue
Purification	Protein A/G purification
Purity	>90%
Isotype	IgG2b

Recommend Usage

Flow Cytometry (5 μ L/ 10^6 cells)
Immunohistochemistry
The optimal working dilution should be determined by the end user.

Storage Buffer

In PBS, pH 7.4 (protein stabilizer, 0.09% sodium azide).

Storage Instruction

Store in the dark at 4°C.

Note

This product contains sodium azide: a POISONOUS AND HAZARDOUS SUBSTANCE which should be handled by trained staff only.

Applications

- Immunohistochemistry

- Flow Cytometry

Flow cytometric analysis of human peripheral blood cells with CD52 monoclonal antibody, clone HI186 (CF-Blue) (Cat # MAB13704).

Gene Info — CD52

Entrez GeneID

[1043](#)

Protein Accession#

[P31358](#)

Gene Name

CD52

Gene Alias

CDW52

Gene Description

CD52 molecule

Omim ID

[114280](#)

Gene Ontology

[Hyperlink](#)

Other Designations

CD52 antigen|CD52 antigen (CAMPATH-1 antigen)|CDW52 antigen (CAMPATH-1 antigen)|OTT
HUMP00000003570