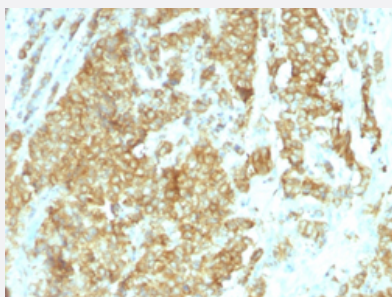


HSP90B1 monoclonal antibody, clone HSP90B1/1192

Catalog # MAB13447 Size 100 ug

Applications



Immunohistochemistry (Formalin/PFA-fixed paraffin-embedded sections)

Immunohistochemical staining (Formalin-fixed paraffin-embedded sections) of human breast cancer with HSP90B1 monoclonal antibody, clone HSP90B1/1192 (Cat # MAB13447).

Specification

Product Description	Rat monoclonal antibody raised against full length recombinant human HSP90B1.
Immunogen	Recombinant protein corresponding to full length human HSP90B1.
Host	Rat
Theoretical MW (kDa)	94
Reactivity	Human
Specificity	This monoclonal antibody is highly specific to HSP90B1 and shows minimal cross-reaction with other members of the HSP90 family.
Form	Liquid
Purification	Protein A/G purification
Isotype	IgG2a, kappa

Recommend Usage

Flow Cytometry (0.5-1 ug/10⁶ cells in 0.1 mL)
Immunofluorescence (0.5-1 ug/mL)
Immunohistochemistry (Formalin/PFA-fixed paraffin-embedded sections) (0.5-1 ug/mL)
Western Blot (0.5-1 ug/mL)
The optimal working dilution should be determined by the end user.

Storage Buffer

In 10 mM PBS (0.05% BSA, 0.05% sodium azide).

Storage Instruction

Store at 4°C.

Note

This product contains sodium azide: a POISONOUS AND HAZARDOUS SUBSTANCE which should be handled by trained staff only.

Applications

- Western Blot

- Immunohistochemistry (Formalin/PFA-fixed paraffin-embedded sections)

Immunohistochemical staining (Formalin-fixed paraffin-embedded sections) of human breast cancer with HSP90B1 monoclonal antibody, clone HSP90B1/1192 (Cat # MAB13447).

- Immunofluorescence

- Flow Cytometry

Gene Info — HSP90B1

Entrez GeneID

[7184](#)

Protein Accession#

[P14625](#)

Gene Name

HSP90B1

Gene Alias

ECGP, GP96, GRP94, TRA1

Gene Description

heat shock protein 90kDa beta (Grp94), member 1

Omim ID

[191175](#)

Gene Ontology

[Hyperlink](#)

Gene Summary

HSP90 proteins are highly conserved molecular chaperones that have key roles in signal transduction, protein folding, protein degradation, and morphologic evolution. HSP90 proteins normally associate with other cochaperones and play important roles in folding newly synthesized proteins or stabilizing and refolding denatured proteins after stress. HSP90B1 is an endoplasmic reticulum HSP90 protein. Other HSP90 proteins are found in cytosol (see HSP90AA1; MIM 140571) and mitochondria (TRAP1; MIM 606219) (Chen et al., 2005 [PubMed 16269234]). [supplied by OMIM]

Other Designations

Tumor rejection antigen-1 (gp96)|endothelial cell (HBMEC) glycoprotein|glucose regulated protein, 94 kDa|heat shock protein 90kDa beta, member 1|tumor rejection antigen (gp96) 1

Pathway

- [Pathways in cancer](#)
- [Prostate cancer](#)

Disease

- [Bipolar Disorder](#)
- [Cardiovascular Diseases](#)
- [Diabetes Mellitus](#)
- [Edema](#)
- [Kidney Failure](#)
- [Schizophrenia](#)