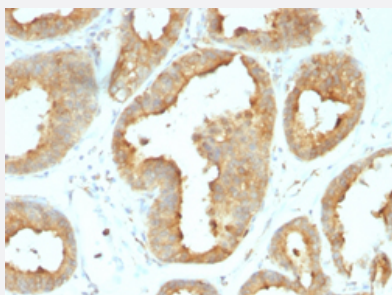


HSP90B1 monoclonal antibody, clone 9G10.F8.2

Catalog # MAB13446 Size 100 ug

Applications



Immunohistochemistry (Formalin/PFA-fixed paraffin-embedded sections)

Immunohistochemical staining (Formalin-fixed paraffin-embedded sections) of human breast cancer with HSP90B1 monoclonal antibody, clone 9G10.F8.2 (Cat # MAB13446).

Specification

Product Description	Rat monoclonal antibody raised against native chicken HSP90B1.
Immunogen	Native purified HSP90B1 from chicken oviducts.
Host	Rat
Theoretical MW (kDa)	94
Reactivity	Chicken, Human
Specificity	This monoclonal antibody is highly specific to HSP90B1 and shows minimal cross-reaction with other members of the HSP90 family.
Form	Liquid
Purification	Protein A/G purification
Isotype	IgG2a, kappa

Recommend Usage

Flow Cytometry (0.5-1 ug/10⁶ cells in 0.1 mL)
Immunofluorescence (0.5-1 ug/mL)
Immunohistochemistry (Formalin/PFA-fixed paraffin-embedded sections) (0.5-1 ug/mL)
Western Blot (0.5-1 ug/mL)
The optimal working dilution should be determined by the end user.

Storage Buffer

In 10 mM PBS (0.05% sodium azide).

Storage Instruction

Store at 4°C.

Note

This product contains sodium azide: a POISONOUS AND HAZARDOUS SUBSTANCE which should be handled by trained staff only.

Applications

- Western Blot

- Immunohistochemistry (Formalin/PFA-fixed paraffin-embedded sections)

Immunohistochemical staining (Formalin-fixed paraffin-embedded sections) of human breast cancer with HSP90B1 monoclonal antibody, clone 9G10.F8.2 (Cat # MAB13446).

- Immunofluorescence

- Flow Cytometry

Gene Info — HSP90B1

Entrez GeneID

[374163](#)

Protein Accession#

[P08110](#)

Gene Name

HSP90B1

Gene Alias

hsp108

Gene Description

heat shock protein 90kDa beta (Grp94), member 1

Gene Ontology

[Hyperlink](#)

Gene Summary

heat shock protein 108

Other Designations

heat shock protein 108