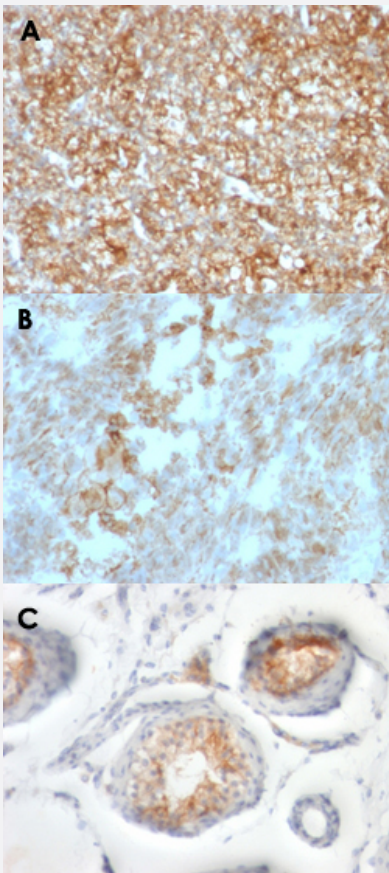


BSG monoclonal antibody, clone BSG/963

Catalog # MAB13441 Size 100 ug

Applications



Immunohistochemistry (Formalin/PFA-fixed paraffin-embedded sections)

Immunohistochemical staining (Formalin-fixed paraffin-embedded sections) of human renal cell carcinoma (A), human colon carcinoma (B) and human testicular carcinoma (C) with BSG monoclonal antibody, clone BSG/963 (Cat # MAB13441).

Specification

Product Description	Mouse monoclonal antibody raised against full length recombinant human BSG.
Immunogen	Recombinant protein corresponding to full length human BSG.
Host	Mouse
Theoretical MW (kDa)	35, 40
Reactivity	Human

Form	Liquid
Purification	Protein A/G purification
Isotype	IgG1
Recommend Usage	Flow Cytometry (0.5-1 ug/10 ⁶ cells in 0.1 mL) Immunofluorescence (1:100-1:200) Immunohistochemistry (Formalin/PFA-fixed paraffin-embedded sections) (0.5-1 ug/mL) The optimal working dilution should be determined by the end user.
Storage Buffer	In 10 mM PBS (0.05% BSA, 0.05% sodium azide).
Storage Instruction	Store at 4°C.
Note	This product contains sodium azide: a POISONOUS AND HAZARDOUS SUBSTANCE which should be handled by trained staff only.

Applications

- Immunohistochemistry (Formalin/PFA-fixed paraffin-embedded sections)

Immunohistochemical staining (Formalin-fixed paraffin-embedded sections) of human renal cell carcinoma (A), human colon carcinoma (B) and human testicular carcinoma (C) with BSG monoclonal antibody, clone BSG/963 (Cat # MAB13441).

- Immunofluorescence

- Flow Cytometry

Gene Info — BSG

Entrez GeneID	682
Protein Accession#	P35613
Gene Name	BSG
Gene Alias	5F7, CD147, EMMPRIN, M6, OK, TCSF
Gene Description	basigin (Ok blood group)
Omim ID	109480 111380
Gene Ontology	Hyperlink

Gene Summary

The protein encoded by this gene is a plasma membrane protein that is important in spermatogenesis, embryo implantation, neural network formation, and tumor progression. The encoded protein is also a member of the immunoglobulin superfamily. Multiple transcript variants encoding different isoforms have been found for this gene. [provided by RefSeq]

Other Designations

CD147 antigen|M6 leukocyte activation antigen|OK blood group antigen|basigin|collagenase stimulatory factor|extracellular matrix metalloproteinase inducer

Disease

- [Cardiovascular Diseases](#)
- [Diabetes Mellitus](#)
- [Edema](#)