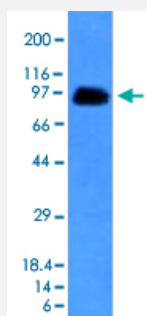


SPN monoclonal antibody, clone SPN/839

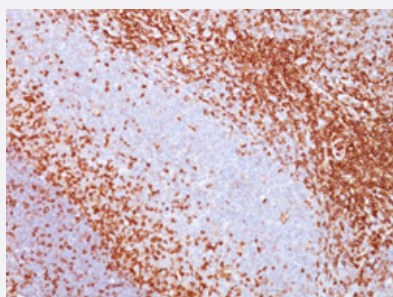
Catalog # MAB13434 Size 100 ug

Applications



Western Blot (Tissue lysate)

Western Blot analysis of human spleen lysate with SPN monoclonal antibody, clone SPN/839 (Cat # MAB13434).



Immunohistochemistry (Formalin/PFA-fixed paraffin-embedded sections)

Immunohistochemical staining (Formalin-fixed paraffin-embedded sections) of human spleen with SPN monoclonal antibody, clone SPN/839 (Cat # MAB13434).

Specification

Product Description	Mouse monoclonal antibody raised against full length recombinant human SPN.
Immunogen	Recombinant protein corresponding to full length human SPN.
Host	Mouse
Theoretical MW (kDa)	95, 115, 135
Reactivity	Human
Form	Liquid
Purification	Protein A/G purification

Isotype	IgG1, kappa
Recommend Usage	Flow Cytometry (0.5-1 ug/10 ⁶ cells in 0.1 mL) Immunofluorescence (1-2 ug/mL) Immunohistochemistry (Formalin/PFA-fixed paraffin-embedded sections) (0.5-1 ug/mL) Western Blot (0.5-1 ug/mL) The optimal working dilution should be determined by the end user.
Storage Buffer	In 10 mM PBS.
Storage Instruction	Store at -20 to -80°C. Aliquot to avoid repeated freezing and thawing.

Applications

- Western Blot (Tissue lysate)

Western Blot analysis of human spleen lysate with SPN monoclonal antibody, clone SPN/839 (Cat # MAB13434).

- Immunohistochemistry (Formalin/PFA-fixed paraffin-embedded sections)

Immunohistochemical staining (Formalin-fixed paraffin-embedded sections) of human spleen with SPN monoclonal antibody, clone SPN/839 (Cat # MAB13434).

- Immunofluorescence

- Flow Cytometry

Gene Info — SPN

Entrez GeneID	6693
Protein Accession#	P16150
Gene Name	SPN
Gene Alias	CD43, GPL115, LSN
Gene Description	sialophorin
Omim ID	182160
Gene Ontology	Hyperlink

Gene Summary

Sialophorin (leukosialin) is a major sialoglycoprotein on the surface of human T lymphocytes, monocytes, granulocytes, and some B lymphocytes, which appears to be important for immune function and may be part of a physiologic ligand-receptor complex involved in T-cell activation.[supplied by OMIM]

Other Designations

leukosialin|sialophorin (gpL115, leukosialin, CD43)|sialophorin (leukosialin, CD43)

Pathway

- [Cell adhesion molecules \(CAMs\)](#)

Disease

- [Kidney Failure](#)