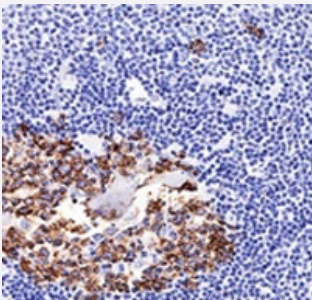


CDw75 monoclonal antibody, clone LN-1

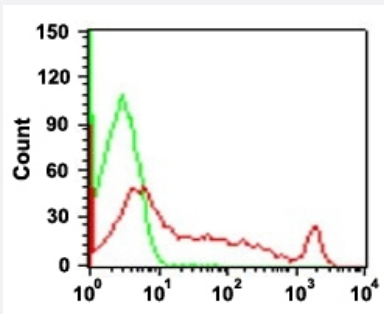
Catalog # MAB13431 Size 100 ug

Applications



Immunohistochemistry (Formalin/PFA-fixed paraffin-embedded sections)

Immunohistochemical staining (Formalin-fixed paraffin-embedded sections) of human spleen with CDw75 monoclonal antibody, clone LN-1 (Cat # MAB13431).



Flow Cytometry

Flow cytometric analysis of human lymphocytes with CDw75 monoclonal antibody, clone LN-1 (Cat # MAB13431) (Red) and isotype control (Green).

Specification

Product Description	Mouse monoclonal antibody raised against native human CDw75.
Immunogen	Nuclei from pokeweed mitogen-stimulated peripheral blood lymphocytes.
Host	Mouse
Theoretical MW (kDa)	46
Reactivity	Human
Form	Liquid
Purification	PEG precipitation

Isotype	IgM, kappa
Recommend Usage	Flow Cytometry (0.5-1 ug/10 ⁶ cells in 0.1 mL) Immunofluorescence (0.5-1 ug/mL) Immunohistochemistry (Formalin/PFA-fixed paraffin-embedded sections) (0.5-1 ug/mL) The optimal working dilution should be determined by the end user.
Storage Buffer	In 10 mM PBS (0.05% BSA, 0.05% sodium azide).
Storage Instruction	Store at 4°C.
Note	This product contains sodium azide: a POISONOUS AND HAZARDOUS SUBSTANCE which should be handled by trained staff only.

Applications

- Immunohistochemistry (Formalin/PFA-fixed paraffin-embedded sections)

Immunohistochemical staining (Formalin-fixed paraffin-embedded sections) of human spleen with CDw75 monoclonal antibody, clone LN-1 (Cat # MAB13431).

- Immunofluorescence

- Flow Cytometry

Flow cytometric analysis of human lymphocytes with CDw75 monoclonal antibody, clone LN-1 (Cat # MAB13431) (Red) and isotype control (Green).

Gene Info — ST6GAL1

Entrez GeneID	6480
Gene Name	ST6GAL1
Gene Alias	CD75, MGC48859, SIAT1, ST6GalI, ST6N
Gene Description	ST6 beta-galactosamide alpha-2,6-sialyltransferase 1
Omim ID	109675
Gene Ontology	Hyperlink

Gene Summary

This gene encodes a member of glycosyltransferase family 29. The encoded protein is a type II membrane protein that catalyzes the transfer of sialic acid from CMP-sialic acid to galactose-containing substrates. The protein, which is normally found in the Golgi but can be proteolytically processed to a soluble form, is involved in the generation of the cell-surface carbohydrate determinants and differentiation antigens HB-6, CD75, and CD76. This gene has been incorrectly referred to as CD75. Three transcript variants encoding two different isoforms have been described. [provided by RefSeq]

Other Designations

CMP-N-acetylneuraminate beta-galactosamide alpha-2,6-sialyltransferase|ST6Gal II|alpha 2,6-ST|sialyltransferase 1 (beta-galactoside alpha-2,6-sialyltransferase)|sialyltransferase 1 (beta-galactoside alpha-2,6-sialyltransferase)

Pathway

- [Metabolic pathways](#)
- [N-Glycan biosynthesis](#)

Disease

- [Tobacco Use Disorder](#)