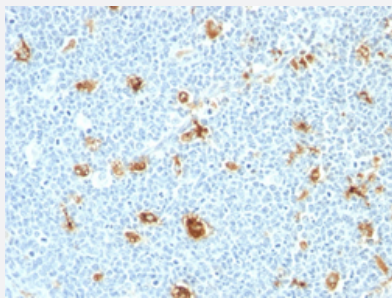


S100A9 monoclonal antibody, clone CAGB/426

Catalog # MAB13428 Size 100 ug

Applications



Immunohistochemistry (Formalin/PFA-fixed paraffin-embedded sections)

Immunohistochemical staining (Formalin-fixed paraffin-embedded sections) of human tonsil with S100A9 monoclonal antibody, clone CAGB/426 (Cat # MAB13428).

Specification

Product Description	Mouse monoclonal antibody raised against full length recombinant human S100A9.
Immunogen	Recombinant protein corresponding to full length human S100A9.
Host	Mouse
Theoretical MW (kDa)	14
Reactivity	Human
Form	Liquid
Isotype	IgM, kappa
Recommend Usage	Immunohistochemistry (Formalin/PFA-fixed paraffin-embedded sections) (Not suitable for frozen tissues.) (1-2 ug/mL for 30 min at RT) (Staining of formalin-fixed tissues requires heating tissue sections in 10 mM Tris with 1 mM EDTA, pH 9.0, for 45 min at 95°C followed by cooling at RT for 20 minutes) The optimal working dilution should be determined by the end user.
Storage Buffer	In 10 mM PBS (0.05% sodium azide).
Storage Instruction	Store at 4°C.

Note

This product contains sodium azide: a POISONOUS AND HAZARDOUS SUBSTANCE which should be handled by trained staff only.

Applications

- Immunohistochemistry (Formalin/PFA-fixed paraffin-embedded sections)

Immunohistochemical staining (Formalin-fixed paraffin-embedded sections) of human tonsil with S100A9 monoclonal antibody, clone CAGB/426 (Cat # MAB13428).

Gene Info — S100A9

Entrez GeneID [6280](#)

Protein Accession# [P06702](#)

Gene Name S100A9

Gene Alias 60B8AG, CAGB, CFAG, CGLB, L1AG, LIAG, MAC387, MIF, MRP14, NIF, P14

Gene Description S100 calcium binding protein A9

Omim ID [123886](#)

Gene Ontology [Hyperlink](#)

Gene Summary The protein encoded by this gene is a member of the S100 family of proteins containing 2 EF-hand calcium-binding motifs. S100 proteins are localized in the cytoplasm and/or nucleus of a wide range of cells, and involved in the regulation of a number of cellular processes such as cell cycle progression and differentiation. S100 genes include at least 13 members which are located as a cluster on chromosome 1q21. This protein may function in the inhibition of casein kinase and altered expression of this protein is associated with the disease cystic fibrosis. [provided by RefSeq]

Other Designations OTTHUMP00000015331|S100 calcium-binding protein A9|S100 calcium-binding protein A9 (calgranulin B)|calgranulin B

Disease

- [Dermatitis](#)
- [Genetic Predisposition to Disease](#)
- [Kidney Calculi](#)