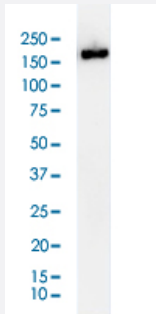


# PODXL monoclonal antibody, clone 2A4

Catalog # MAB13400

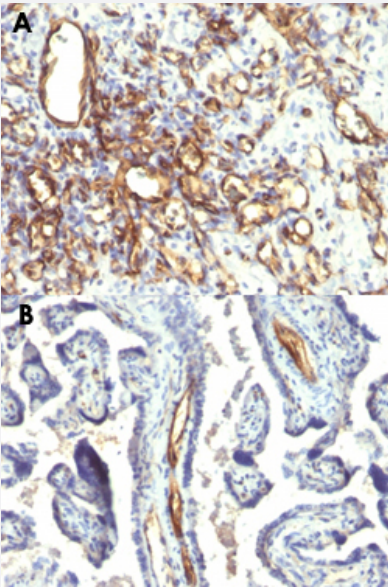
Size 100 ug

## Applications



### Western Blot (Cell lysate)

Western Blot analysis of HeLa cell lysate.



### Immunohistochemistry (Formalin/PFA-fixed paraffin-embedded sections)

Immunohistochemical staining (Formalin-fixed paraffin-embedded sections) of human angiosarcoma (A) and human placenta (B) with PODXL monoclonal antibody, clone 2A4 (Cat # MAB13400).

## Specification

### Product Description

Mouse monoclonal antibody raised against partial recombinant human PODXL.

### Immunogen

Recombinant protein corresponding to intracellular, transmembrane, and part of the extracellular domain of human PODXL.

### Host

Mouse

Theoretical MW (kDa)	165-170
Reactivity	Human
Form	Liquid
Isotype	IgM, kappa
Recommend Usage	Flow Cytometry (1-2 ug/million cells) Immunofluorescence (1-2 ug/mL) Immunohistochemistry (Formalin/PFA-fixed paraffin-embedded sections) (1-2 ug/mL for 30 min at RT) (Staining of formalin-fixed tissues requires heating tissue sections in 10 mM Tris with 1 mM EDTA , pH 9.0, for 45 min at 95°C followed by cooling at RT for 20 minutes) Western Blot (1-2 ug/mL) The optimal working dilution should be determined by the end user.
Storage Buffer	In 10 mM PBS (0.05% sodium azide).
Storage Instruction	Store at 4°C.
Note	This product contains sodium azide: a POISONOUS AND HAZARDOUS SUBSTANCE which should be handled by trained staff only.

## Applications

- Western Blot (Cell lysate)

Western Blot analysis of HeLa cell lysate.

- Immunohistochemistry (Formalin/PFA-fixed paraffin-embedded sections)

Immunohistochemical staining (Formalin-fixed paraffin-embedded sections) of human angiosarcoma (A) and human placenta (B) with PODXL monoclonal antibody, clone 2A4 (Cat # MAB13400).

- Immunofluorescence

- Flow Cytometry

## Gene Info — PODXL

Entrez GeneID	<a href="#">5420</a>
Protein Accession#	<a href="#">O00592</a>
Gene Name	PODXL

Gene Alias	Gp200, MGC138240, PC, PCLP
Gene Description	podocalyxin-like
Omim ID	<a href="#">602632</a>
Gene Ontology	<a href="#">Hyperlink</a>
Gene Summary	<p>This gene encodes a member of the sialomucin protein family. The encoded protein was originally identified as an important component of glomerular podocytes. Podocytes are highly differentiated epithelial cells with interdigitating foot processes covering the outer aspect of the glomerular basement membrane. Other biological activities of the encoded protein include: binding in a membrane protein complex with Na<sup>+</sup>/H<sup>+</sup> exchanger regulatory factor to intracellular cytoskeletal elements, playing a role in hematopoietic cell differentiation, and being expressed in vascular endothelium cells and binding to L-selectin. [provided by RefSeq]</p>
Other Designations	-

## Disease

- [Genetic Predisposition to Disease](#)
- [Neoplasm Invasiveness](#)
- [Ovarian Neoplasms](#)
- [Prostate cancer](#)
- [Prostatic Neoplasms](#)