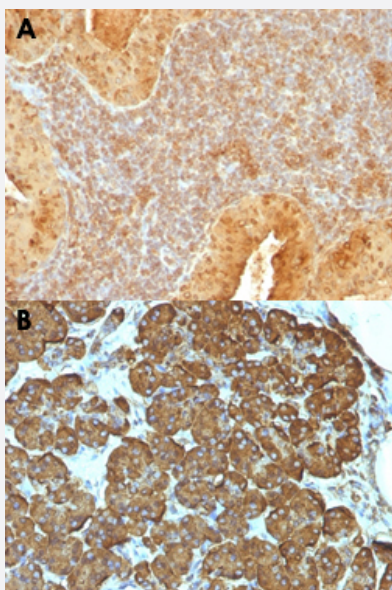


CYCS monoclonal antibody, clone 7H8.2C12

Catalog # MAB13397 Size 100 ug

Applications



Immunohistochemistry (Formalin/PFA-fixed paraffin-embedded sections)

Immunohistochemical staining (Formalin-fixed paraffin-embedded sections) of human salivary tumor (A) and human pancreas (B) with CYCS monoclonal antibody, clone 7H8.2C12 (Cat # MAB13397).

Specification

Product Description	Mouse monoclonal antibody raised against synthetic peptide of CYCS.
Immunogen	A synthetic peptide corresponding to amino acids 1-80, 81-104 and 66-104 of pigeon CYCS.
Host	Mouse
Theoretical MW (kDa)	15
Reactivity	Human, Pigeon
Form	Liquid
Purification	Protein A/G purification
Isotype	IgG2b, kappa

Recommend Usage

Flow Cytometry (0.5-1 ug/10⁶ cells in 0.1 mL)
Immunofluorescence (0.5-1 ug/mL)
Immunohistochemistry (Formalin/PFA-fixed paraffin-embedded sections) (0.25-0.5 ug/mL)
Western Blot (0.5-1 ug/mL)
The optimal working dilution should be determined by the end user.

Storage Buffer

In 1 mM PBS (0.05% BSA, 0.05% sodium azide).

Storage Instruction

Store at 4°C.

Note

This product contains sodium azide: a POISONOUS AND HAZARDOUS SUBSTANCE which should be handled by trained staff only.

Applications

- Western Blot
- Immunohistochemistry (Formalin/PFA-fixed paraffin-embedded sections)
Immunohistochemical staining (Formalin-fixed paraffin-embedded sections) of human salivary tumor (A) and human pancreas (B) with CYCS monoclonal antibody, clone 7H8.2C12 (Cat # MAB13397).
- Immunofluorescence
- Flow Cytometry

Gene Info — CYCS

Entrez GeneID

[54205](#)

Protein Accession#

[P99999](#)

Gene Name

CYCS

Gene Alias

CYC, HCS

Gene Description

cytochrome c, somatic

Omim ID

[123970](#)

Gene Ontology

[Hyperlink](#)

Gene Summary

This gene encodes cytochrome c, a component of the electron transport chain in mitochondria. The heme group of cytochrome c accepts electrons from the b-c1 complex and transfers electrons to the cytochrome oxidase complex. Cytochrome c is also involved in initiation of apoptosis. Upon release of cytochrome c to the cytoplasm, the protein binds apoptotic protease activating factor which activates the apoptotic initiator procaspase 9. Many cytochrome c pseudogenes exist, scattered throughout the human genome. [provided by RefSeq]

Other Designations

cytochrome c

Pathway

- [Amyotrophic lateral sclerosis \(ALS\)](#)
- [Apoptosis](#)
- [Colorectal cancer](#)
- [p53 signaling pathway](#)
- [Pathways in cancer](#)
- [Small cell lung cancer](#)

Disease

- [Thrombocytopenia](#)