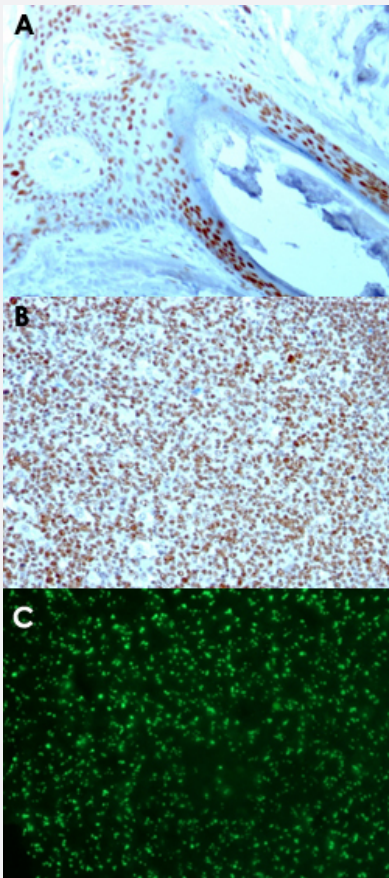


NCL monoclonal antibody, clone 364-5

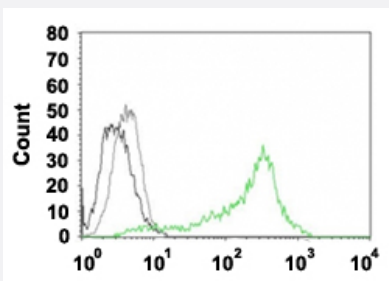
Catalog # MAB13383 Size 100 ug

Applications



Immunohistochemistry (Formalin/PFA-fixed paraffin-embedded sections)

Immunohistochemical staining (Formalin-fixed paraffin-embedded sections) of human skin (A), human tonsil (B) with NCL monoclonal antibody, clone 364-5 (Cat # MAB13383) and human colon carcinoma (C) with AF488 conjugated format of NCL monoclonal antibody, clone 364-5 (Cat # MAB13383).



Flow Cytometry

Flow cytometric analysis of HEK 293T cells with NCL monoclonal antibody, clone 364-5 (Cat # MAB13383). Black: Cells alone; Grey: Isotype control; Green: AF488 conjugated format of NCL monoclonal antibody, clone 364-5.

Specification

Product Description	Mouse monoclonal antibody raised against native human NCL.
Immunogen	DHL-1 nuclear extract.
Host	Mouse
Theoretical MW (kDa)	76
Reactivity	Human
Form	Liquid
Purification	Protein A/G purification
Isotype	IgG1, kappa
Recommend Usage	Flow Cytometry (0.5-1 ug/10 ⁶ cells in 0.1 mL) Immunofluorescence (0.5-1 ug/mL) Immunohistochemistry (Formalin/PFA-fixed paraffin-embedded sections) (0.25-0.5 ug/mL) Western Blot (0.5-1 ug/mL) The optimal working dilution should be determined by the end user.
Storage Buffer	In 10 mM PBS (0.05% BSA, 0.05% sodium azide).
Storage Instruction	Store at 4°C (with sodium azide). Store at -80°C (without sodium azide).
Note	This product contains sodium azide: a POISONOUS AND HAZARDOUS SUBSTANCE which should be handled by trained staff only.

Applications

- Western Blot
- Immunohistochemistry (Formalin/PFA-fixed paraffin-embedded sections)
Immunohistochemical staining (Formalin-fixed paraffin-embedded sections) of human skin (A), human tonsil (B) with NCL monoclonal antibody, clone 364-5 (Cat # MAB13383) and human colon carcinoma (C) with AF488 conjugated format of NCL monoclonal antibody, clone 364-5 (Cat # MAB13383).
- Immunofluorescence

- Flow Cytometry

Flow cytometric analysis of HEK 293T cells with NCL monoclonal antibody, clone 364-5 (Cat # MAB13383). Black: Cells alone; Grey: Isotype control; Green: AF488 conjugated format of NCL monoclonal antibody, clone 364-5.

Gene Info — NCL

Entrez GeneID	4691
Protein Accession#	P19338
Gene Name	NCL
Gene Alias	C23, FLJ45706
Gene Description	nucleolin
Omim ID	164035
Gene Ontology	Hyperlink
Gene Summary	Nucleolin (NCL), a eukaryotic nucleolar phosphoprotein, is involved in the synthesis and maturation of ribosomes. It is located mainly in dense fibrillar regions of the nucleolus. Human NCL gene consists of 14 exons with 13 introns and spans approximately 11kb. The intron 11 of the NCL gene encodes a small nucleolar RNA, termed U20. [provided by RefSeq]
Other Designations	-

Pathway

- [Pathogenic Escherichia coli infection - EHEC](#)