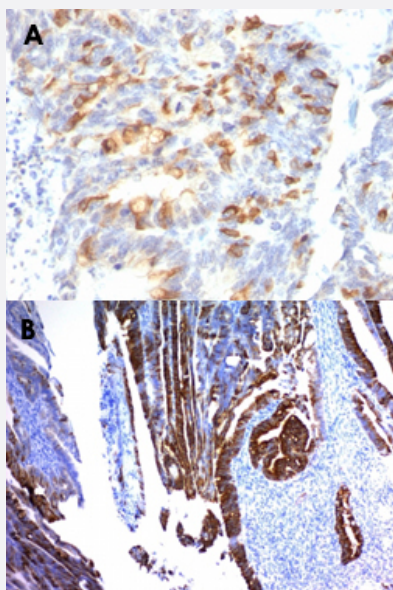


MUC2 monoclonal antibody, clone MLP/842

Catalog # MAB13368 Size 100 ug

Applications



Immunohistochemistry (Formalin/PFA-fixed paraffin-embedded sections)

Immunohistochemical staining (Formalin-fixed paraffin-embedded sections) of human colon cancer (A, B) with MUC2 monoclonal antibody, clone MLP/842 (Cat # MAB13368).

Specification

Product Description	Mouse monoclonal antibody raised against full length recombinant human MUC2.
Immunogen	Recombinant protein corresponding to full length human MUC2.
Host	Mouse
Theoretical MW (kDa)	520
Reactivity	Human
Specificity	This monoclonal antibody shows no cross-reaction with human milk fat globule membranes, MUC1, or MUC3.
Form	Liquid
Purification	Protein A/G purification

Isotype	IgG1, kappa
Recommend Usage	Flow Cytometry (0.5-1 ug/10 ⁶ cells in 0.1 mL) Immunofluorescence (1-2 ug/mL) Immunohistochemistry (Formalin/PFA-fixed paraffin-embedded sections) (0.5-1 ug/mL) The optimal working dilution should be determined by the end user.
Storage Buffer	In 10 mM PBS.
Storage Instruction	Store at -20 to -80°C. Aliquot to avoid repeated freezing and thawing.

Applications

- Immunohistochemistry (Formalin/PFA-fixed paraffin-embedded sections)

Immunohistochemical staining (Formalin-fixed paraffin-embedded sections) of human colon cancer (A, B) with MUC2 monoclonal antibody, clone MLP/842 (Cat # MAB13368).

- Immunofluorescence

- Flow Cytometry

Gene Info — MUC2

Entrez GeneID	4583
Protein Accession#	Q02817
Gene Name	MUC2
Gene Alias	MLP, SMUC
Gene Description	mucin 2, oligomeric mucus/gel-forming
Omim ID	158370
Gene Ontology	Hyperlink
Gene Summary	This gene encodes a member of the mucin protein family. Mucins are high molecular weight glyco proteins produced by many epithelial tissues. The protein encoded by this gene is secreted and forms an insoluble mucous barrier that protects the gut lumen. The protein polymerizes into a gel of which 80% is composed of oligosaccharide side chains by weight. The protein features a central domain containing tandem repeats rich in threonine and proline that varies between 50 and 115 copies in different individuals. Alternatively spliced transcript variants of this gene have been described, but their full-length nature is not known. [provided by RefSeq]

Other Designations

mucin 2|mucin 2, intestinal/tracheal|mucin-like protein

Pathway

- [Vibrio cholerae infection](#)

Disease

- [Asthma](#)
- [Bronchiolitis](#)
- [Chronic Disease](#)
- [Genetic Predisposition to Disease](#)
- [Infant](#)
- [Lung Diseases](#)
- [Otitis Media](#)
- [Otitis Media with Effusion](#)
- [Recurrence](#)
- [Respiratory Syncytial Virus Infections](#)
- [Stomach Neoplasms](#)
- [Tobacco Use Disorder](#)