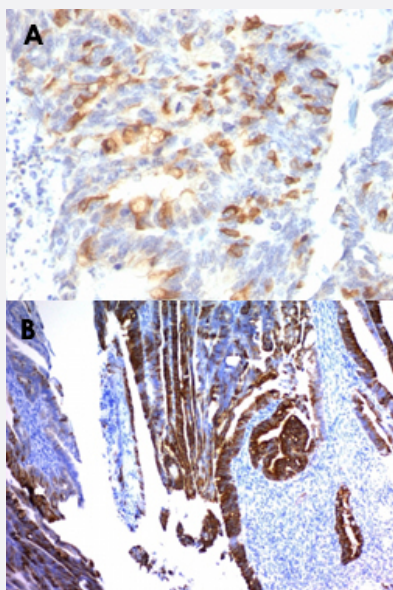


# MUC2 monoclonal antibody, clone MLP/842

Catalog # MAB13367      Size 100 ug

## Applications



### Immunohistochemistry (Formalin/PFA-fixed paraffin-embedded sections)

Immunohistochemical staining (Formalin-fixed paraffin-embedded sections) of human colon cancer (A, B) with MUC2 monoclonal antibody, clone MLP/842 (Cat # MAB13367).

## Specification

<b>Product Description</b>	Mouse monoclonal antibody raised against full length recombinant human MUC2.
<b>Immunogen</b>	Recombinant protein corresponding to full length human MUC2.
<b>Host</b>	Mouse
<b>Theoretical MW (kDa)</b>	520
<b>Reactivity</b>	Human
<b>Specificity</b>	This monoclonal antibody shows no cross-reaction with human milk fat globule membranes, MUC1, or MUC3.
<b>Form</b>	Liquid
<b>Purification</b>	Protein A/G purification

Isotype	IgG1, kappa
Recommend Usage	Flow Cytometry (0.5-1 ug/10 <sup>6</sup> cells in 0.1 mL) Immunofluorescence (1-2 ug/mL) Immunohistochemistry (Formalin/PFA-fixed paraffin-embedded sections) (0.5-1 ug/mL) The optimal working dilution should be determined by the end user.
Storage Buffer	In 10 mM PBS (0.05% BSA, 0.05% sodium azide).
Storage Instruction	Store at 4°C.
Note	This product contains sodium azide: a POISONOUS AND HAZARDOUS SUBSTANCE which should be handled by trained staff only.

## Applications

- Immunohistochemistry (Formalin/PFA-fixed paraffin-embedded sections)

Immunohistochemical staining (Formalin-fixed paraffin-embedded sections) of human colon cancer (A, B) with MUC2 monoclonal antibody, clone MLP/842 (Cat # MAB13367).

- Immunofluorescence

- Flow Cytometry

## Gene Info — MUC2

Entrez GeneID	<a href="#">4583</a>
Protein Accession#	<a href="#">Q02817</a>
Gene Name	MUC2
Gene Alias	MLP, SMUC
Gene Description	mucin 2, oligomeric mucus/gel-forming
Omim ID	<a href="#">158370</a>
Gene Ontology	<a href="#">Hyperlink</a>

**Gene Summary**

This gene encodes a member of the mucin protein family. Mucins are high molecular weight glyco proteins produced by many epithelial tissues. The protein encoded by this gene is secreted and forms an insoluble mucous barrier that protects the gut lumen. The protein polymerizes into a gel of which 80% is composed of oligosaccharide side chains by weight. The protein features a central domain containing tandem repeats rich in threonine and proline that varies between 50 and 115 copies in different individuals. Alternatively spliced transcript variants of this gene have been described, but their full-length nature is not known. [provided by RefSeq]

**Other Designations**

mucin 2|mucin 2, intestinal/tracheal|mucin-like protein

**Pathway**

- [Vibrio cholerae infection](#)

**Disease**

- [Asthma](#)
- [Bronchiolitis](#)
- [Chronic Disease](#)
- [Genetic Predisposition to Disease](#)
- [Infant](#)
- [Lung Diseases](#)
- [Otitis Media](#)
- [Otitis Media with Effusion](#)
- [Recurrence](#)
- [Respiratory Syncytial Virus Infections](#)
- [Stomach Neoplasms](#)
- [Tobacco Use Disorder](#)