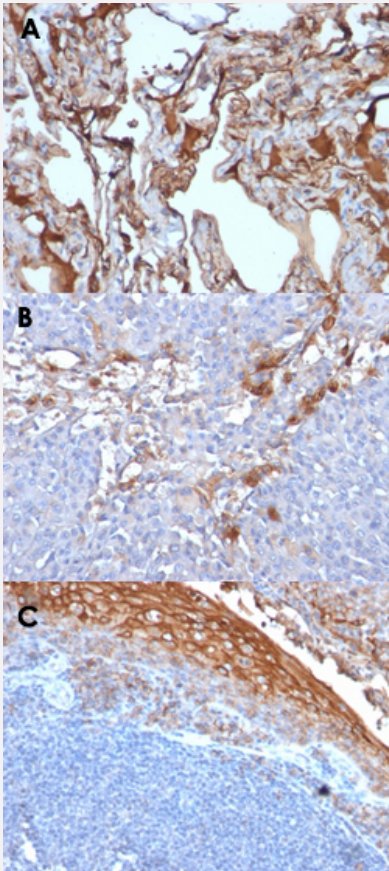


# MCAM monoclonal antibody, clone MUC18/1130

Catalog # MAB13346      Size 100 ug

## Applications



### Immunohistochemistry (Formalin/PFA-fixed paraffin-embedded sections)

Immunohistochemical staining (Formalin-fixed paraffin-embedded sections) of human melanoma (A, B) and human tonsil (C) with MCAM monoclonal antibody, clone MUC18/1130 (Cat # MAB13346).

## Specification

Product Description	Mouse monoclonal antibody raised against full length recombinant human MCAM.
Immunogen	Recombinant protein corresponding to full length human MCAM.
Host	Mouse
Theoretical MW (kDa)	130
Reactivity	Human

Form	Liquid
Purification	Protein A/G purification
Isotype	IgG1, kappa
Recommend Usage	Flow Cytometry (0.5-1 ug/10 <sup>6</sup> cells in 0.1 mL) Immunofluorescence (0.5-1 ug/mL) Immunohistochemistry (Formalin/PFA-fixed paraffin-embedded sections) (0.5-1 ug/mL) The optimal working dilution should be determined by the end user.
Storage Buffer	In 10 mM PBS.
Storage Instruction	Store at -20 to -80°C. Aliquot to avoid repeated freezing and thawing.

## Applications

- Immunohistochemistry (Formalin/PFA-fixed paraffin-embedded sections)

Immunohistochemical staining (Formalin-fixed paraffin-embedded sections) of human melanoma (A, B) and human tonsil (C) with MCAM monoclonal antibody, clone MUC18/1130 (Cat # MAB13346).

- Immunofluorescence
- Flow Cytometry

## Gene Info — MCAM

Entrez GeneID	<a href="#">4162</a>
Protein Accession#	<a href="#">P43121</a>
Gene Name	MCAM
Gene Alias	CD146, MUC18
Gene Description	melanoma cell adhesion molecule
Omim ID	<a href="#">155735</a>
Gene Ontology	<a href="#">Hyperlink</a>
Other Designations	Gicerin melanoma adhesion molecule