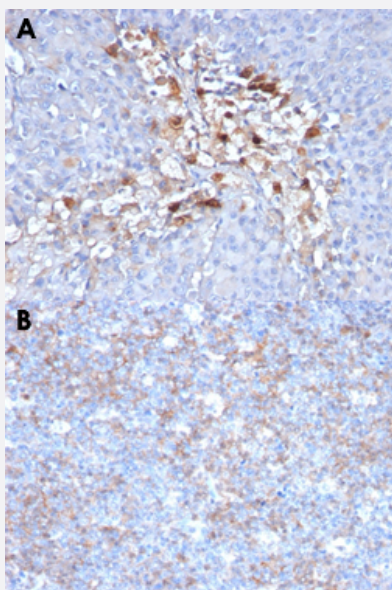


# MCAM monoclonal antibody, clone C146/634

Catalog # MAB13343      Size 100 ug

## Applications



### Immunohistochemistry (Formalin/PFA-fixed paraffin-embedded sections)

Immunohistochemical staining (Formalin-fixed paraffin-embedded sections) of human melanoma (A) and human tonsil (B) with MCAM monoclonal antibody, clone C146/634 (Cat # MAB13343).

## Specification

**Product Description** Mouse monoclonal antibody raised against full length recombinant human MCAM.

**Immunogen** Recombinant protein corresponding to full length human MCAM.

**Host** Mouse

**Theoretical MW (kDa)** 130

**Reactivity** Human

**Form** Liquid

**Purification** Protein A/G purification

**Isotype** IgG1, kappa

**Recommend Usage**

Flow Cytometry (0.5-1 ug/10<sup>6</sup> cells in 0.1 mL)  
Immunofluorescence (0.5-1 ug/mL)  
Immunohistochemistry (Formalin/PFA-fixed paraffin-embedded sections) (0.5-1 ug/mL)  
The optimal working dilution should be determined by the end user.

**Storage Buffer**

In 10 mM PBS (0.05% BSA, 0.05% sodium azide).

**Storage Instruction**

Store at 4°C.

**Note**

This product contains sodium azide: a POISONOUS AND HAZARDOUS SUBSTANCE which should be handled by trained staff only.

## Applications

- Immunohistochemistry (Formalin/PFA-fixed paraffin-embedded sections)

Immunohistochemical staining (Formalin-fixed paraffin-embedded sections) of human melanoma (A) and human tonsil (B) with MCAM monoclonal antibody, clone C146/634 (Cat # MAB13343).

- Immunofluorescence

- Flow Cytometry

## Gene Info — MCAM

**Entrez GeneID**

[4162](#)

**Protein Accession#**

[P43121](#)

**Gene Name**

MCAM

**Gene Alias**

CD146, MUC18

**Gene Description**

melanoma cell adhesion molecule

**Omim ID**

[155735](#)

**Gene Ontology**

[Hyperlink](#)

**Other Designations**

Gicerin|melanoma adhesion molecule