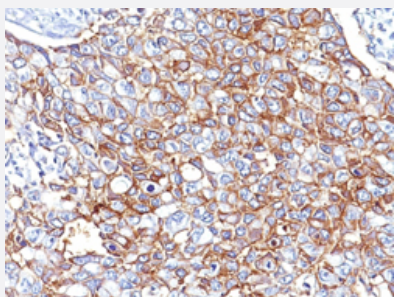


EPCAM monoclonal antibody, clone EGP40/826

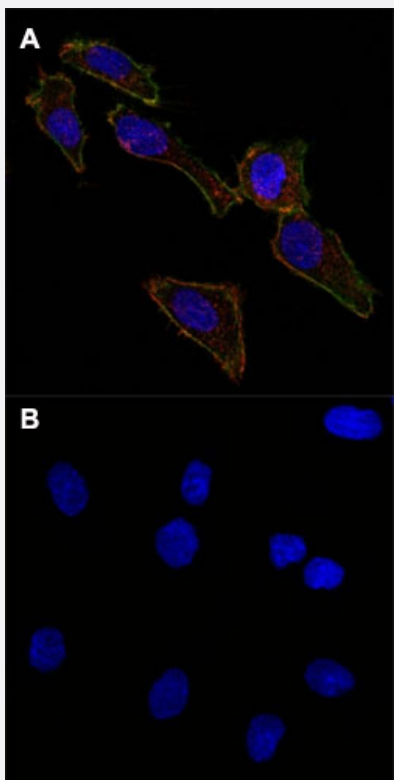
Catalog # MAB13334 Size 100 ug

Applications



Immunohistochemistry (Formalin/PFA-fixed paraffin-embedded sections)

Immunohistochemical staining (Formalin-fixed paraffin-embedded sections) of human breast cancer with EPCAM monoclonal antibody, clone EGP40/826 (Cat # MAB13334).



Immunofluorescence

Confocal Immunofluorescent staining of SK-OV-3 cells with AF488 conjugated format of EPCAM monoclonal antibody, clone EGP40/826 (Cat # MAB13334) (Green). F-actin filaments were labeled with DyLight 554 Phalloidin (Red). DAPI was used to stain the cell nuclei (Blue) (A). Confocal Immunofluorescent staining of SK-OV-3 cells with AF488 conjugated format of Isotype Control Monoclonal Antibody (IgG1) (Green). DAPI was used to stain the cell nuclei (Blue) (B).

Specification

Product Description

Mouse monoclonal antibody raised against synthetic peptide of human EPCAM.

| | |
|-----------------------------|---|
| Immunogen | A synthetic peptide corresponding to amino acids 20-60 at N-terminus region of human EPCAM. |
| Host | Mouse |
| Theoretical MW (kDa) | 40-43 |
| Reactivity | Human |
| Form | Liquid |
| Purification | Protein A/G purification |
| Isotype | IgG1, kappa |
| Recommend Usage | Flow Cytometry (0.5-1 ug/10 ⁶ cells in 0.1 mL) Immunofluorescence (1-2 ug/mL) Immunohistochemistry (Formalin/PFA-fixed paraffin-embedded sections) (0.5-1 ug/mL) Western Blot (0.5-1 ug/mL) The optimal working dilution should be determined by the end user. |
| Storage Buffer | In 10 mM PBS. |
| Storage Instruction | Store at -20 to -80°C. Aliquot to avoid repeated freezing and thawing. |

Applications

- Western Blot

- Immunohistochemistry (Formalin/PFA-fixed paraffin-embedded sections)

Immunohistochemical staining (Formalin-fixed paraffin-embedded sections) of human breast cancer with EPCAM monoclonal antibody, clone EGP40/826 (Cat # MAB13334).

- Immunofluorescence

Confocal Immunofluorescent staining of SK-OV-3 cells with AF488 conjugated format of EPCAM monoclonal antibody, clone EGP40/826 (Cat # MAB13334) (Green). F-actin filaments were labeled with DyLight 554 Phalloidin (Red). DAPI was used to stain the cell nuclei (Blue) (A). Confocal Immunofluorescent staining of SK-OV-3 cells with AF488 conjugated format of Isotype Control Monoclonal Antibody (IgG1) (Green). DAPI was used to stain the cell nuclei (Blue) (B).

- Flow Cytometry

Gene Info — EPCAM

Entrez GeneID

[4072](#)

| | |
|--------------------|--|
| Protein Accession# | P16422 |
| Gene Name | EPCAM |
| Gene Alias | 17-1A, 323/A3, CD326, CO-17A, CO17-1A, EGP, EGP-2, EGP34, EGP40, ESA, Ep-CAM, GA733-2, HEA125, KS1/4, KSA, M4S1, MH99, MIC18, MK-1, MOC31, TACST-1, TACSTD1, TROP1, hEGP-2 |
| Gene Description | epithelial cell adhesion molecule |
| Omim ID | 185535 |
| Gene Ontology | Hyperlink |
| Gene Summary | <p>This gene encodes a carcinoma-associated antigen and is a member of a family that includes at least two type I membrane proteins. This antigen is expressed on most normal epithelial cells and gastrointestinal carcinomas and functions as a homotypic calcium-independent cell adhesion molecule. The antigen is being used as a target for immunotherapy treatment of human carcinomas. Mutations in this gene result in congenital tufting enteropathy. [provided by RefSeq]</p> |
| Other Designations | adenocarcinoma-associated antigen carcinoma-associated antigen GA733-2 human epithelial glycoprotein-2 membrane component, chromosome 4, surface marker (35kD glycoprotein) tumor-associated calcium signal transducer 1 |

Disease

- [Genetic Predisposition to Disease](#)
- [Ovarian Neoplasms](#)