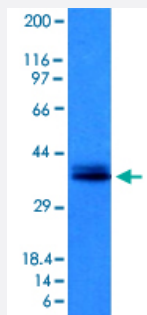


# EPCAM monoclonal antibody, clone EGP40/1120

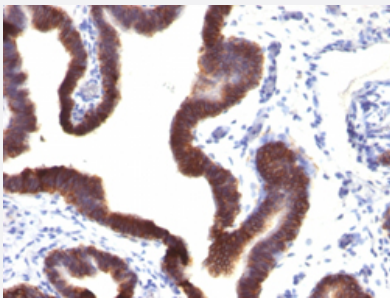
Catalog # MAB13330      Size 100 ug

## Applications



### Western Blot (Cell lysate)

Western Blot analysis of HCT-116 cell lysate with EPCAM monoclonal antibody, clone EGP40/1120 (Cat # MAB13330).



### Immunohistochemistry (Formalin/PFA-fixed paraffin-embedded sections)

Immunohistochemical staining (Formalin-fixed paraffin-embedded sections) of human ovarian cancer with EPCAM monoclonal antibody, clone EGP40/1120 (Cat # MAB13330).

## Specification

Product Description	Mouse monoclonal antibody raised against full length recombinant human EPCAM.
Immunogen	Recombinant protein corresponding to full length human EPCAM.
Host	Mouse
Theoretical MW (kDa)	40-43
Reactivity	Human
Form	Liquid
Purification	Protein A/G purification

Isotype	IgG1, kappa
Recommend Usage	Flow Cytometry (0.5-1 ug/10 <sup>6</sup> cells in 0.1 mL) Immunofluorescence (1-2 ug/mL) Immunohistochemistry (Formalin/PFA-fixed paraffin-embedded sections) (0.25-0.5 ug/mL) Western Blot (0.5-1 ug/mL) The optimal working dilution should be determined by the end user.
Storage Buffer	In 10 mM PBS.
Storage Instruction	Store at -20 to -80°C. Aliquot to avoid repeated freezing and thawing.

## Applications

- Western Blot (Cell lysate)

Western Blot analysis of HCT-116 cell lysate with EPCAM monoclonal antibody, clone EGP40/1120 (Cat # MAB13330).

- Immunohistochemistry (Formalin/PFA-fixed paraffin-embedded sections)

Immunohistochemical staining (Formalin-fixed paraffin-embedded sections) of human ovarian cancer with EPCAM monoclonal antibody, clone EGP40/1120 (Cat # MAB13330).

- Immunofluorescence

- Flow Cytometry

## Gene Info — EPCAM

Entrez GeneID	<a href="#">4072</a>
Protein Accession#	<a href="#">P16422</a>
Gene Name	EPCAM
Gene Alias	17-1A, 323/A3, CD326, CO-17A, CO17-1A, EGP, EGP-2, EGP34, EGP40, ESA, Ep-CAM, GA7 33-2, HEA125, KS1/4, KSA, M4S1, MH99, MIC18, MK-1, MOC31, TACST-1, TACSTD1, TROP 1, hEGP-2
Gene Description	epithelial cell adhesion molecule
Omim ID	<a href="#">185535</a>
Gene Ontology	<a href="#">Hyperlink</a>

**Gene Summary**

This gene encodes a carcinoma-associated antigen and is a member of a family that includes at least two type I membrane proteins. This antigen is expressed on most normal epithelial cells and gastrointestinal carcinomas and functions as a homotypic calcium-independent cell adhesion molecule. The antigen is being used as a target for immunotherapy treatment of human carcinomas. Mutations in this gene result in congenital tufting enteropathy. [provided by RefSeq]

**Other Designations**

adenocarcinoma-associated antigen|carcinoma-associated antigen GA733-2|human epithelial glycoprotein-2|membrane component, chromosome 4, surface marker (35kD glycoprotein)|tumor-associated calcium signal transducer 1

**Disease**

- [Genetic Predisposition to Disease](#)
- [Ovarian Neoplasms](#)