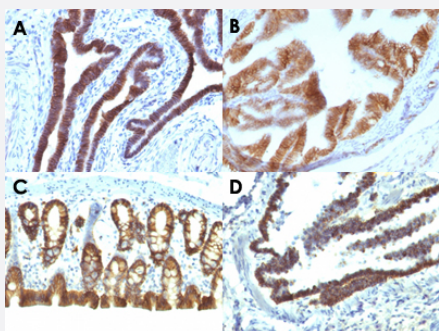


EPCAM monoclonal antibody, clone EGP40/1110

Catalog # MAB13327 Size 100 ug

Applications



Immunohistochemistry (Formalin/PFA-fixed paraffin-embedded sections)

Immunohistochemical staining (Formalin-fixed paraffin-embedded sections) of human ovarian carcinoma (A), rat oviduct (B), rat colon (C) and rat lung (D) with EPCAM monoclonal antibody, clone EGP40/1110 (Cat # MAB13327).

Specification

Product Description	Mouse monoclonal antibody raised against partial recombinant human EPCAM.
Immunogen	Recombinant protein corresponding to cytoplasmic domain of human EPCAM.
Host	Mouse
Theoretical MW (kDa)	40-43
Reactivity	Human, Rat
Form	Liquid
Purification	Protein A/G purification
Isotype	IgG2b, kappa
Recommend Usage	Flow Cytometry (0.5-1 ug/10 ⁶ cells in 0.1 mL) Immunofluorescence (1-2 ug/mL) Immunohistochemistry (Formalin/PFA-fixed paraffin-embedded sections) (0.5-1 ug/mL) Western Blot (0.5-1 ug/mL) The optimal working dilution should be determined by the end user.
Storage Buffer	In 10 mM PBS (0.05% BSA, 0.05% sodium azide).

Storage Instruction

Store at 4°C.

Note

This product contains sodium azide: a POISONOUS AND HAZARDOUS SUBSTANCE which should be handled by trained staff only.

Applications

- Western Blot
- Immunohistochemistry (Formalin/PFA-fixed paraffin-embedded sections)

Immunohistochemical staining (Formalin-fixed paraffin-embedded sections) of human ovarian carcinoma (A), rat oviduct (B), rat colon (C) and rat lung (D) with EPCAM monoclonal antibody, clone EGP40/1110 (Cat # MAB13327).

- Immunofluorescence
- Flow Cytometry

Gene Info — EPCAM

Entrez GeneID

[4072](#)

Protein Accession#

[P16422](#)

Gene Name

EPCAM

Gene Alias

17-1A, 323/A3, CD326, CO-17A, CO17-1A, EGP, EGP-2, EGP34, EGP40, ESA, Ep-CAM, GA733-2, HEA125, KS1/4, KSA, M4S1, MH99, MIC18, MK-1, MOC31, TACST-1, TACSTD1, TROP1, hEGP-2

Gene Description

epithelial cell adhesion molecule

Omim ID

[185535](#)

Gene Ontology

[Hyperlink](#)

Gene Summary

This gene encodes a carcinoma-associated antigen and is a member of a family that includes at least two type I membrane proteins. This antigen is expressed on most normal epithelial cells and gastrointestinal carcinomas and functions as a homotypic calcium-independent cell adhesion molecule. The antigen is being used as a target for immunotherapy treatment of human carcinomas. Mutations in this gene result in congenital tufting enteropathy. [provided by RefSeq]

Other Designations

adenocarcinoma-associated antigen|carcinoma-associated antigen GA733-2|human epithelial glycoprotein-2|membrane component, chromosome 4, surface marker (35kD glycoprotein)|tumor-associated calcium signal transducer 1

Disease

- [Genetic Predisposition to Disease](#)
- [Ovarian Neoplasms](#)