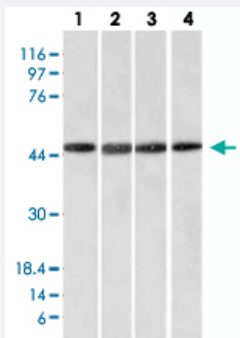


# FBXO5 monoclonal antibody, clone EMI1/1176

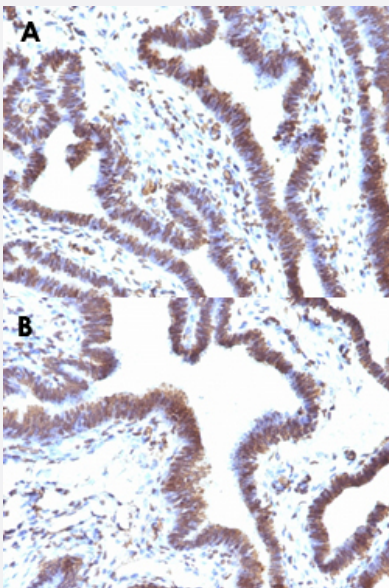
Catalog # MAB13276      Size 100 ug

## Applications



### Western Blot (Cell lysate)

Western Blot analysis of Lane 1: HeLa, Lane 2: HepG2, Lane 3: HEK293 and Lane 4: K562 cell lysates with FBXO5 monoclonal antibody, clone EMI1/1176 (Cat # MAB13276).



### Immunohistochemistry (Formalin/PFA-fixed paraffin-embedded sections)

Immunohistochemical staining (Formalin-fixed paraffin-embedded sections) of human ovarian cancer (A, B) with FBXO5 monoclonal antibody, clone EMI1/1176 (Cat # MAB13276).

## Specification

<b>Product Description</b>	Mouse monoclonal antibody raised against partial recombinant human FBXO5.
<b>Immunogen</b>	Recombinant protein corresponding to 203 residues around amino acids 1-250 of human FBXO5.
<b>Host</b>	Mouse

Theoretical MW (kDa)	56
Reactivity	Human
Form	Liquid
Purification	Protein A/G purification
Isotype	IgG2a, kappa
Recommend Usage	Flow Cytometry (0.5-1 ug/10 <sup>6</sup> cells in 0.1 mL) Immunofluorescence (0.5-1 ug/mL) Immunohistochemistry (Formalin/PFA-fixed paraffin-embedded sections) (0.5-1 ug/mL) Western Blot (1-2 ug/mL) The optimal working dilution should be determined by the end user.
Storage Buffer	In 1 mM PBS.
Storage Instruction	Store at -20 to -80°C. Aliquot to avoid repeated freezing and thawing.

## Applications

- Western Blot (Cell lysate)

Western Blot analysis of Lane 1: HeLa, Lane 2: HepG2, Lane 3: HEK293 and Lane 4: K562 cell lysates with FBXO5 monoclonal antibody, clone EMI1/1176 (Cat # MAB13276).

- Immunohistochemistry (Formalin/PFA-fixed paraffin-embedded sections)

Immunohistochemical staining (Formalin-fixed paraffin-embedded sections) of human ovarian cancer (A, B) with FBXO5 monoclonal antibody, clone EMI1/1176 (Cat # MAB13276).

- Immunofluorescence

- Flow Cytometry

## Gene Info — FBXO5

Entrez GeneID	<a href="#">26271</a>
Protein Accession#	<a href="#">Q9UKT4</a>
Gene Name	FBXO5
Gene Alias	EMI1, FBX5, Fbxo31

Gene Description	F-box protein 5
Omim ID	<a href="#">606013</a>
Gene Ontology	<a href="#">Hyperlink</a>
Gene Summary	<p>This gene encodes a member of the F-box protein family which is characterized by an approximately 40 amino acid motif, the F-box. The F-box proteins constitute one of the four subunits of the ubiquitin protein ligase complex called SCFs (SKP1-cullin-F-box), which function in phosphorylation-dependent ubiquitination. The F-box proteins are divided into 3 classes: Fbws containing WD-40 domains, Fbls containing leucine-rich repeats, and Fbxs containing either different protein-protein interaction modules or no recognizable motifs. The protein encoded by this gene belongs to the Fbxs class. This protein is similar to xenopus early mitotic inhibitor-1 (Emi1), which is a mitotic regulator that interacts with Cdc20 and inhibits the anaphase promoting complex. Alternatively spliced transcript variants encoding different isoforms have been identified. [provided by RefSeq]</p>
Other Designations	F-box only protein 5 F-box protein Fbx5 OTTHUMP00000017453 early mitotic inhibitor 1