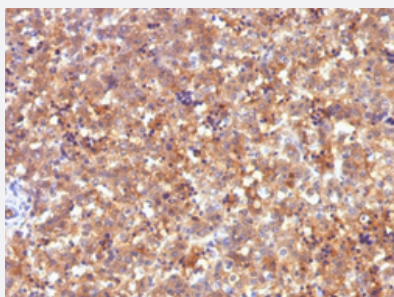


# AFP monoclonal antibody, clone C2

Catalog # MAB13263      Size 100 ug

## Applications



### Immunohistochemistry (Formalin/PFA-fixed paraffin-embedded sections)

Immunohistochemical staining (Formalin-fixed paraffin-embedded sections) of human fetal liver with AFP monoclonal antibody, clone C2 (Cat # MAB13263).

## Specification

Product Description	Mouse monoclonal antibody raised against native human AFP.
Immunogen	Native purified AFP from serum of a hepatoma patient.
Host	Mouse
Theoretical MW (kDa)	70
Reactivity	Human
Specificity	This monoclonal antibody is highly specific to AFP and shows no cross-reaction with other oncofetal antigens or serum albumin.
Form	Liquid
Purification	Protein A/G purification
Isotype	IgG1, kappa
Recommend Usage	Flow Cytometry (0.5-1 ug/10 <sup>6</sup> cells in 0.1 mL) Immunofluorescence (0.5-1 ug/mL) Immunohistochemistry (Formalin/PFA-fixed paraffin-embedded sections) (1-2 ug/mL) The optimal working dilution should be determined by the end user.

Storage Buffer	In 10 mM PBS (0.05% BSA, 0.05% sodium azide).
Storage Instruction	Store at 4°C.
Note	This product contains sodium azide: a POISONOUS AND HAZARDOUS SUBSTANCE which should be handled by trained staff only.

## Applications

- Immunohistochemistry (Formalin/PFA-fixed paraffin-embedded sections)

Immunohistochemical staining (Formalin-fixed paraffin-embedded sections) of human fetal liver with AFP monoclonal antibody, clone C2 (Cat # MAB13263).

- Immunofluorescence

- Flow Cytometry

## Gene Info — AFP

Entrez GeneID	<a href="#">174</a>
Protein Accession#	<a href="#">P02771</a>
Gene Name	AFP
Gene Alias	FETA, HPAFP
Gene Description	alpha-fetoprotein
Omim ID	<a href="#">104150</a>
Gene Ontology	<a href="#">Hyperlink</a>
Gene Summary	<p>This gene encodes alpha-fetoprotein, a major plasma protein produced by the yolk sac and the liver during fetal life. Alpha-fetoprotein expression in adults is often associated with hepatoma or teratoma. However, hereditary persistence of alpha-fetoprotein may also be found in individuals with no obvious pathology. The protein is thought to be the fetal counterpart of serum albumin, and the alpha-fetoprotein and albumin genes are present in tandem in the same transcriptional orientation on chromosome 4. Alpha-fetoprotein is found in monomeric as well as dimeric and trimeric forms, and binds copper, nickel, fatty acids and bilirubin. The level of alpha-fetoprotein in amniotic fluid is used to measure renal loss of protein to screen for spina bifida and anencephaly. [provided by RefSeq]</p>
Other Designations	OTTHUMP00000160480 alpha-1-fetoprotein alpha-fetoglobulin

## Disease

- [Carcinoma](#)
- [Liver Cirrhosis](#)
- [Liver Neoplasms](#)