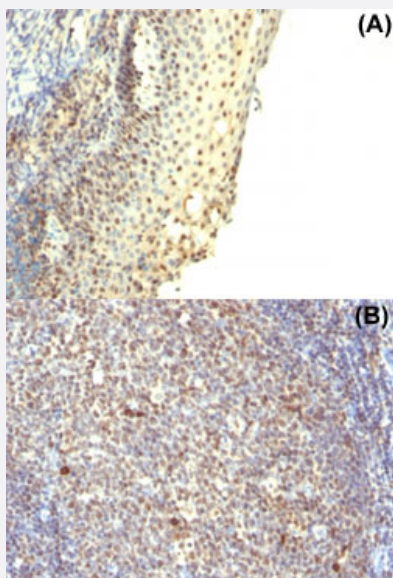


# IPO-38 monoclonal antibody, clone IPO-38

Catalog # MAB13232      Size 100 ug

## Applications



### Immunohistochemistry (Formalin/PFA-fixed paraffin-embedded sections)

Immunohistochemical staining (Formalin-fixed paraffin-embedded sections) of human tonsil using IPO-38 monoclonal antibody, clone IPO-38 (Cat # MAB13232).

## Specification

Product Description	Mouse monoclonal antibody raised against native human IPO-38.
Immunogen	Spleen cells of a patient with hairy cell leukemia.
Host	Mouse
Theoretical MW (kDa)	14-16
Reactivity	Human
Form	Liquid
Isotype	IgM, kappa

<b>Recommend Usage</b>	Immunohistochemistry (Formalin/PFA-fixed paraffin-embedded sections) (1-2 ug/mL for 30 min at RT) (Staining of formalin-fixed tissues requires heating tissue sections in 10 mM Tris with 1 mM EDTA , pH 9.0, for 45 min at 95°C followed by cooling at RT for 20 minutes) The optimal working dilution should be determined by the end user.
<b>Storage Buffer</b>	In 10 mM PBS (0.05% sodium azide).
<b>Storage Instruction</b>	Store at 4°C.
<b>Note</b>	This product contains sodium azide: a POISONOUS AND HAZARDOUS SUBSTANCE which should be handled by trained staff only.

## Applications

- Immunohistochemistry (Formalin/PFA-fixed paraffin-embedded sections)

Immunohistochemical staining (Formalin-fixed paraffin-embedded sections) of human tonsil using IPO-38 monoclonal antibody, clone IPO-38 (Cat # MAB13232).