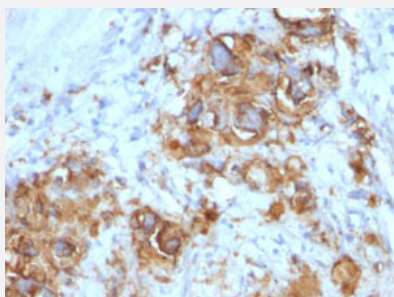


CA19-9 (Sialyl Lewisa) monoclonal antibody, clone 121SLE

Catalog # MAB13216

Size 100 ug

Applications



Immunohistochemistry (Formalin/PFA-fixed paraffin-embedded sections)

Immunohistochemical staining (Formalin-fixed paraffin-embedded sections) of human gastric carcinoma using CA19-9 (Sialyl Lewisa) monoclonal antibody, clone 121SLE (Cat # MAB13216).

Specification

Product Description	Mouse monoclonal antibody raised against native human CA19-9 (Sialyl Lewisa).
Immunogen	Precipitin lines obtained after immuno-diffusion using monoclonal antibody, clone 116-NS-19-9 and mucins isolated from an ovarian cyst of a Lewis A+B- patient (0Le).
Host	Mouse
Theoretical MW (kDa)	>400
Reactivity	Human
Form	Liquid
Isotype	IgM, kappa
Recommend Usage	Immunohistochemistry (Formalin/PFA-fixed paraffin-embedded sections) (1-2 ug/mL for 30 min at RT) (Staining of formalin-fixed tissues requires heating tissue sections in 10 mM Tris with 1 mM EDTA , pH 9.0, for 45 min at 95°C followed by cooling at RT for 20 minutes) The optimal working dilution should be determined by the end user.
Storage Buffer	In 10 mM PBS (0.05% sodium azide).
Storage Instruction	Store at 4°C.

Note

This product contains sodium azide: a POISONOUS AND HAZARDOUS SUBSTANCE which should be handled by trained staff only.

Applications

- Immunohistochemistry (Formalin/PFA-fixed paraffin-embedded sections)

Immunohistochemical staining (Formalin-fixed paraffin-embedded sections) of human gastric carcinoma using CA19-9 (Sialyl Lewis^x) monoclonal antibody, clone 121SLE (Cat # MAB13216).