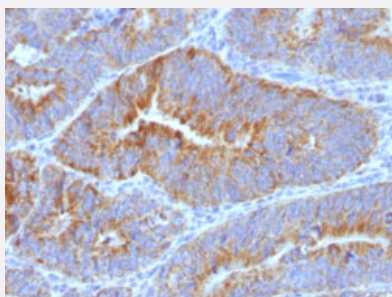


Thomsen-Friedenreich antigen monoclonal antibody, clone SPM320

Catalog # MAB13208 Size 100 ug

Applications



Immunohistochemistry (Formalin/PFA-fixed paraffin-embedded sections)

Immunohistochemical staining (Formalin-fixed paraffin-embedded sections) of human colon cancer with Thomsen-Friedenreich antigen monoclonal antibody, clone SPM320 (Cat # MAB13208).

Specification

Product Description	Mouse monoclonal antibody raised against native human Thomsen-Friedenreich antigen.
Immunogen	Neuraminidase treated human red blood cells.
Host	Mouse
Reactivity	Human
Form	Liquid
Isotype	IgM, kappa
Recommend Usage	Immunofluorescence (1-2 ug/mL) Immunohistochemistry (Formalin/PFA-fixed paraffin-embedded sections) (1-2 ug/mL for 30 min at RT) (Staining of formalin-fixed tissues requires heating tissue sections in 10 mM Tris with 1 mM EDTA , pH 9.0, for 45 min at 95°C followed by cooling at RT for 20 minutes) The optimal working dilution should be determined by the end user.
Storage Buffer	In 10 mM PBS (0.05% sodium azide).
Storage Instruction	Store at -20°C.

Note

This product contains sodium azide: a POISONOUS AND HAZARDOUS SUBSTANCE which should be handled by trained staff only.

Applications

- Immunohistochemistry (Formalin/PFA-fixed paraffin-embedded sections)

Immunohistochemical staining (Formalin-fixed paraffin-embedded sections) of human colon cancer with Thomsen-Friedenreich antigen monoclonal antibody, clone SPM320 (Cat # MAB13208).

- Immunofluorescence