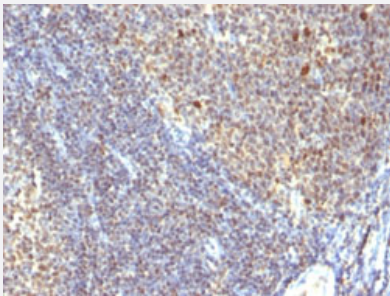


# IPO-38 monoclonal antibody, clone SPM260

Catalog # MAB13206      Size 100 ug

## Applications



### Immunohistochemistry (Formalin/PFA-fixed paraffin-embedded sections)

Immunohistochemical staining (Formalin-fixed paraffin-embedded sections) of human tonsil with IPO-38 monoclonal antibody, clone SPM260 (Cat # MAB13206).

## Specification

<b>Product Description</b>	Mouse monoclonal antibody raised against native human IPO-38.
<b>Immunogen</b>	Spleen cells of a patient with hairy cell leukemia.
<b>Host</b>	Mouse
<b>Reactivity</b>	Human
<b>Form</b>	Liquid
<b>Isotype</b>	IgM, kappa
<b>Recommend Usage</b>	Flow Cytometry (1-2 ug/million cells) Immunofluorescence (1-2 ug/mL) Immunohistochemistry (Formalin/PFA-fixed paraffin-embedded sections) (1-2 ug/mL for 30 min at R T) (Staining of formalin-fixed tissues requires heating tissue sections in 10 mM Tris with 1 mM EDTA , pH 9.0, for 45 min at 95°C followed by cooling at RT for 20 minutes) The optimal working dilution should be determined by the end user.
<b>Storage Buffer</b>	In 10 mM PBS (0.05% sodium azide).
<b>Storage Instruction</b>	Store at 4°C.

**Note**

This product contains sodium azide: a POISONOUS AND HAZARDOUS SUBSTANCE which should be handled by trained staff only.

## Applications

- Immunohistochemistry (Formalin/PFA-fixed paraffin-embedded sections)

Immunohistochemical staining (Formalin-fixed paraffin-embedded sections) of human tonsil with IPO-38 monoclonal antibody, clone SPM260 (Cat # MAB13206).

- Immunofluorescence

- Flow Cytometry