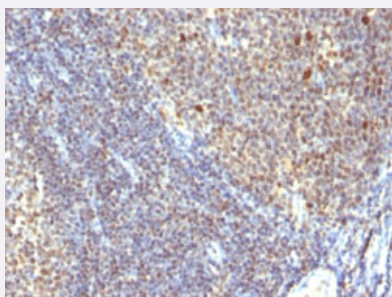


IPO-38 monoclonal antibody, clone SPM260

Catalog # MAB13205 Size 100 ug

Applications



Immunohistochemistry (Formalin/PFA-fixed paraffin-embedded sections)

Immunohistochemical staining (Formalin-fixed paraffin-embedded sections) of human tonsil with IPO-38 monoclonal antibody, clone SPM260 (Cat # MAB13205).

Specification

Product Description Mouse monoclonal antibody raised against native human IPO-38.

Immunogen Spleen cells of a patient with hairy cell leukemia.

Host Mouse

Reactivity Human

Form Liquid

Purification PEG precipitation

Isotype IgM, kappa

Recommend Usage
 Flow Cytometry (0.5-1 ug/10⁶ cells in 0.1 mL)
 Immunofluorescence (0.5-1 ug/mL)
 Immunohistochemistry (Formalin/PFA-fixed paraffin-embedded sections) (0.5-1 ug/mL)
 The optimal working dilution should be determined by the end user.

Storage Buffer In 10 mM PBS (0.05% BSA, 0.05% sodium azide).

Storage Instruction Store at 4°C.

Note

This product contains sodium azide: a POISONOUS AND HAZARDOUS SUBSTANCE which should be handled by trained staff only.

Applications

- Immunohistochemistry (Formalin/PFA-fixed paraffin-embedded sections)

Immunohistochemical staining (Formalin-fixed paraffin-embedded sections) of human tonsil with IPO-38 monoclonal antibody, clone SPM260 (Cat # MAB13205).

- Immunofluorescence

- Flow Cytometry