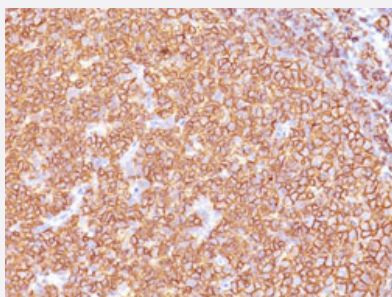


MS4A1 monoclonal antibody, clone SPM618

Catalog # MAB13182 Size 100 ug

Applications



Immunohistochemistry (Formalin/PFA-fixed paraffin-embedded sections)

Immunohistochemical staining (Formalin-fixed paraffin-embedded sections) of human tonsil with MS4A1 monoclonal antibody, clone SPM618 (Cat # MAB13182).

Specification

Product Description	Mouse monoclonal antibody raised against full length recombinant human MS4A1.
Immunogen	Recombinant protein corresponding to full length human MS4A1.
Host	Mouse
Reactivity	Human
Form	Liquid
Purification	Protein A/G purification
Isotype	IgG2a, kappa
Recommend Usage	Flow Cytometry (0.5-1 ug/10 ⁶ cells in 0.1 mL) Immunofluorescence (0.5-1 ug/mL) Immunohistochemistry (Formalin/PFA-fixed paraffin-embedded sections) (0.5-1 ug/mL) The optimal working dilution should be determined by the end user.
Storage Buffer	In 10 mM PBS.
Storage Instruction	Store at -20 to -80°C. Aliquot to avoid repeated freezing and thawing.

Applications

- Immunohistochemistry (Formalin/PFA-fixed paraffin-embedded sections)

Immunohistochemical staining (Formalin-fixed paraffin-embedded sections) of human tonsil with MS4A1 monoclonal antibody, clone SPM618 (Cat # MAB13182).

- Immunofluorescence

- Flow Cytometry

Gene Info — MS4A1

Entrez GeneID	931
Protein Accession#	P11836
Gene Name	MS4A1
Gene Alias	B1, Bp35, CD20, LEU-16, MGC3969, MS4A2, S7
Gene Description	membrane-spanning 4-domains, subfamily A, member 1
Omim ID	112210
Gene Ontology	Hyperlink
Gene Summary	This gene encodes a member of the membrane-spanning 4A gene family. Members of this nascent protein family are characterized by common structural features and similar intron/exon splice boundaries and display unique expression patterns among hematopoietic cells and nonlymphoid tissues. This gene encodes a B-lymphocyte surface molecule which plays a role in the development and differentiation of B-cells into plasma cells. This family member is localized to 11q12, among a cluster of family members. Alternative splicing of this gene results in two transcript variants which encode the same protein. [provided by RefSeq]
Other Designations	B-lymphocyte cell-surface antigen B1 CD20 antigen CD20 receptor

Pathway

- [Hematopoietic cell lineage](#)

Disease

- [Breast cancer](#)
- [Breast Neoplasms](#)
- [Genetic Predisposition to Disease](#)
- [Lymphoma](#)
- [Neoplasm Recurrence](#)
- [Ovarian cancer](#)