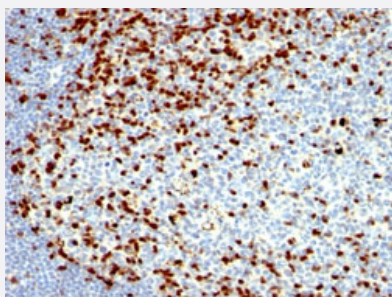


ZAP70 monoclonal antibody, clone SPM362

Catalog # MAB13175 Size 100 ug

Applications



Immunohistochemistry (Formalin/PFA-fixed paraffin-embedded sections)

Immunohistochemical staining (Formalin-fixed paraffin-embedded sections) of human tonsil with ZAP70 monoclonal antibody, clone SPM362 (Cat # MAB13175).

Specification

| | |
|-----------------------------|---|
| Product Description | Mouse monoclonal antibody raised against partial recombinant human ZAP70. |
| Immunogen | Recombinant protein corresponding to amino acids 1-254 and encompassing SH2 domain of human ZAP70. |
| Host | Mouse |
| Theoretical MW (kDa) | 70 |
| Reactivity | Human |
| Form | Liquid |
| Purification | Protein A/G purification |
| Isotype | IgG2a, kappa |
| Recommend Usage | Flow Cytometry (0.5-1 ug/10 ⁶ cells in 0.1 mL) Immunofluorescence (0.5-1 ug/mL) Immunohistochemistry (Formalin/PFA-fixed paraffin-embedded sections) (0.5-1 ug/mL) The optimal working dilution should be determined by the end user. |
| Storage Buffer | In 1 mM PBS (0.05% BSA, 0.05% sodium azide). |

Storage Instruction

Store at 4°C.

Note

This product contains sodium azide: a POISONOUS AND HAZARDOUS SUBSTANCE which should be handled by trained staff only.

Applications

- Immunohistochemistry (Formalin/PFA-fixed paraffin-embedded sections)

Immunohistochemical staining (Formalin-fixed paraffin-embedded sections) of human tonsil with ZAP70 monoclonal antibody, clone SPM362 (Cat # MAB13175).

- Immunofluorescence

- Flow Cytometry

Gene Info — ZAP70

Entrez GeneID[7535](#)**Protein Accession#**[P43403](#)**Gene Name**

ZAP70

Gene Alias

FLJ17670, FLJ17679, SRK, STD, TZK, ZAP-70

Gene Description

zeta-chain (TCR) associated protein kinase 70kDa

Omim ID[176947](#)**Gene Ontology**[Hyperlink](#)**Gene Summary**

This gene encodes an enzyme belonging to the protein tyrosine kinase family, and it plays a role in T-cell development and lymphocyte activation. This enzyme, which is phosphorylated on tyrosine residues upon T-cell antigen receptor (TCR) stimulation, functions in the initial step of TCR-mediated signal transduction in combination with the Src family kinases, Lck and Fyn. This enzyme is also essential for thymocyte development. Mutations in this gene cause selective T-cell defect, a severe combined immunodeficiency disease characterized by a selective absence of CD8-positive T-cells. Two transcript variants that encode different isoforms have been found for this gene. [provided by RefSeq]

Other Designations

syk-related tyrosine kinase|zeta-chain (TCR) associated protein kinase (70 kD)|zeta-chain associated protein kinase 70kDa|zeta-chain associated protein kinase, 70kD

Pathway

- [Natural killer cell mediated cytotoxicity](#)
- [Primary immunodeficiency](#)
- [T cell receptor signaling pathway](#)

Disease

- [HIV Infections](#)