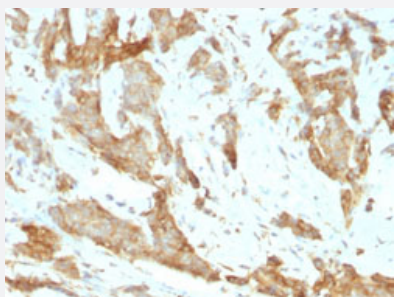


# HSP90B1 monoclonal antibody, clone SPM249

Catalog # MAB13170      Size 100 ug

## Applications



### Immunohistochemistry (Formalin/PFA-fixed paraffin-embedded sections)

Immunohistochemical staining (Formalin-fixed paraffin-embedded sections) of human breast cancer with HSP90B1 monoclonal antibody, clone SPM249 (Cat # MAB13170).

## Specification

<b>Product Description</b>	Rat monoclonal antibody raised against native chicken HSP90B1.
<b>Immunogen</b>	Native purified HSP90B1 from chicken oviducts.
<b>Host</b>	Rat
<b>Theoretical MW (kDa)</b>	94
<b>Reactivity</b>	Chicken, Human
<b>Specificity</b>	This monoclonal antibody is highly specific to HSP90B1 and shows minimal cross-reaction with other members of the HSP90 family.
<b>Form</b>	Liquid
<b>Purification</b>	Protein A/G purification
<b>Isotype</b>	IgG2a, kappa

**Recommend Usage**

Flow Cytometry (0.5-1 ug/10<sup>6</sup> cells in 0.1 mL)  
Immunofluorescence (0.5-1 ug/mL)  
Immunohistochemistry (Formalin/PFA-fixed paraffin-embedded sections) (0.5-1 ug/mL)  
Western Blot (0.5-1 ug/mL)  
The optimal working dilution should be determined by the end user.

**Storage Buffer**

In 10 mM PBS.

**Storage Instruction**

Store at -20 to -80°C.  
Aliquot to avoid repeated freezing and thawing.

## Applications

- Western Blot
- Immunohistochemistry (Formalin/PFA-fixed paraffin-embedded sections)  
Immunohistochemical staining (Formalin-fixed paraffin-embedded sections) of human breast cancer with HSP90B1 monoclonal antibody, clone SPM249 (Cat # MAB13170).
- Immunofluorescence
- Flow Cytometry

## Gene Info — HSP90B1

**Entrez GeneID** [374163](#)

**Protein Accession#** [P08110](#)

**Gene Name** HSP90B1

**Gene Alias** hsp108

**Gene Description** heat shock protein 90kDa beta (Grp94), member 1

**Gene Ontology** [Hyperlink](#)

**Gene Summary** heat shock protein 108

**Other Designations** heat shock protein 108