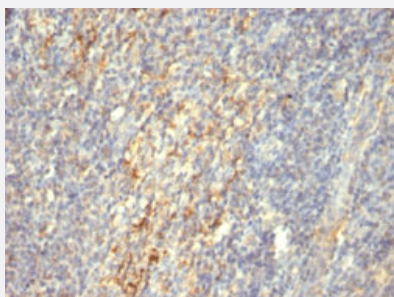


TGM2 monoclonal antibody, clone SPM592

Catalog # MAB13168

Size 100 ug

Applications



Immunohistochemistry (Formalin/PFA-fixed paraffin-embedded sections)

Immunohistochemical staining (Formalin-fixed paraffin-embedded sections) of human tonsil with TGM2 monoclonal antibody, clone SPM592 (Cat # MAB13168).

Specification

Product Description Mouse monoclonal antibody raised against full length recombinant human TGM2.

Immunogen Recombinant protein corresponding to full length human TGM2.

Host Mouse

Theoretical MW (kDa) 77-85

Reactivity Human

Form Liquid

Purification Protein A/G purification

Isotype IgG2a, kappa

Recommend Usage

- Flow Cytometry (0.5-1 ug/10⁶ cells in 0.1 mL)
- Immunofluorescence (0.5-1 ug/mL)
- Immunohistochemistry (Formalin/PFA-fixed paraffin-embedded sections) (0.5-1 ug/mL)
- The optimal working dilution should be determined by the end user.

Storage Buffer In 10 mM PBS.

Storage Instruction

Store at -20 to -80°C.
Aliquot to avoid repeated freezing and thawing.

Applications

- Immunohistochemistry (Formalin/PFA-fixed paraffin-embedded sections)

Immunohistochemical staining (Formalin-fixed paraffin-embedded sections) of human tonsil with TGM2 monoclonal antibody, clone SPM592 (Cat # MAB13168).

- Immunofluorescence
- Flow Cytometry

Gene Info — TGM2

Entrez GeneID [7052](#)

Protein Accession# [P21980](#)

Gene Name TGM2

Gene Alias G-ALPHA-h, GNAH, TG2, TGC

Gene Description transglutaminase 2 (C polypeptide, protein-glutamine-gamma-glutamyltransferase)

Omim ID [190196](#)

Gene Ontology [Hyperlink](#)

Gene Summary Transglutaminases are enzymes that catalyze the crosslinking of proteins by epsilon-gamma glutamyl lysine isopeptide bonds. While the primary structure of transglutaminases is not conserved, they all have the same amino acid sequence at their active sites and their activity is calcium-dependent. The protein encoded by this gene acts as a monomer, is induced by retinoic acid, and appears to be involved in apoptosis. Finally, the encoded protein is the autoantigen implicated in celiac disease. Two transcript variants encoding different isoforms have been found for this gene. [provided by RefSeq]

Other Designations C polypeptide|OTTHUMP00000030960|TGase C|TGase-H|protein-glutamine-gamma-glutamyltransferase|tissue transglutaminase|transglutaminase 2|transglutaminase C

Disease

- [Celiac Disease](#)

- [Diabetes Mellitus](#)
- [Exfoliation Syndrome](#)
- [Genetic Predisposition to Disease](#)
- [Glaucoma](#)
- [Schizophrenia](#)