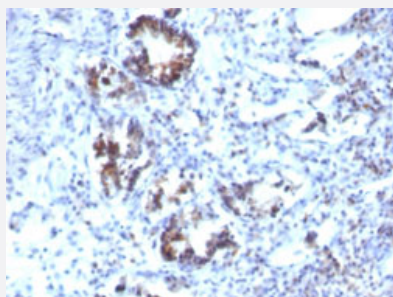


TAGLN monoclonal antibody, clone SPM606

Catalog # MAB13163 Size 100 ug

Applications



Immunohistochemistry (Formalin/PFA-fixed paraffin-embedded sections)

Immunohistochemical staining (Formalin-fixed paraffin-embedded sections) of human colon cancer with TAGLN monoclonal antibody, clone SPM606 (Cat # MAB13163).

Specification

Product Description	Mouse monoclonal antibody raised against full length recombinant human TAGLN.
Immunogen	Recombinant protein corresponding to full length human TAGLN.
Host	Mouse
Theoretical MW (kDa)	22
Reactivity	Human
Specificity	This monoclonal antibody identified as TAGLN, also designated SM22-alpha. It may cross-react with SM22-beta.
Form	Liquid
Purification	Protein A/G purification
Isotype	IgG1, kappa
Recommend Usage	Flow Cytometry (0.5-1 ug/10 ⁶ cells in 0.1 mL) Immunofluorescence (1-2 ug/mL) Immunohistochemistry (Formalin/PFA-fixed paraffin-embedded sections) (0.5-1 ug/mL) The optimal working dilution should be determined by the end user.

Storage Buffer	In 10 mM PBS (0.05% BSA, 0.05% sodium azide).
Storage Instruction	Store at 4°C.
Note	This product contains sodium azide: a POISONOUS AND HAZARDOUS SUBSTANCE which should be handled by trained staff only.

Applications

- Immunohistochemistry (Formalin/PFA-fixed paraffin-embedded sections)

Immunohistochemical staining (Formalin-fixed paraffin-embedded sections) of human colon cancer with TAGLN monoclonal antibody, clone SPM606 (Cat # MAB13163).

- Immunofluorescence

- Flow Cytometry

Gene Info — TAGLN

Entrez GeneID	6876
Protein Accession#	Q01995
Gene Name	TAGLN
Gene Alias	DKFZp686P11128, SM22, SMCC, TAGLN1, WS3-10
Gene Description	transgelin
Omim ID	600818
Gene Ontology	Hyperlink
Gene Summary	The protein encoded by this gene is a transformation and shape-change sensitive actin cross-linking/gelling protein found in fibroblasts and smooth muscle. Its expression is down-regulated in many cell lines, and this down-regulation may be an early and sensitive marker for the onset of transformation. A functional role of this protein is unclear. Two transcript variants encoding the same protein have been found for this gene. [provided by RefSeq]
Other Designations	SM22-alpha transgelin variant 2

Disease

- [Cardiovascular Diseases](#)
- [Diabetes Mellitus](#)
- [Edema](#)
- [Genetic Predisposition to Disease](#)
- [Prostatic Neoplasms](#)
- [Tobacco Use Disorder](#)