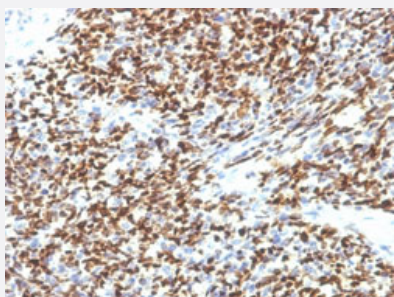


# PAX7 monoclonal antibody, clone SPM613

Catalog # MAB13135      Size 100 ug

## Applications



### Immunohistochemistry (Formalin/PFA-fixed paraffin-embedded sections)

Immunohistochemical staining (Formalin-fixed paraffin-embedded sections) of human rhabdomyosarcoma with PAX7 monoclonal antibody, clone SPM613 (Cat # MAB13135).

## Specification

<b>Product Description</b>	Mouse monoclonal antibody raised against partial recombinant human PAX7.
<b>Immunogen</b>	Recombinant protein corresponding to amino acids 300-600 of human PAX7.
<b>Host</b>	Mouse
<b>Theoretical MW (kDa)</b>	57
<b>Reactivity</b>	Human
<b>Form</b>	Liquid
<b>Purification</b>	Protein A/G purification
<b>Isotype</b>	IgG1, kappa
<b>Recommend Usage</b>	Immunohistochemistry (Formalin/PFA-fixed paraffin-embedded sections) (0.5-1 ug/mL) The optimal working dilution should be determined by the end user.
<b>Storage Buffer</b>	In 10 mM PBS (0.05% BSA, 0.05% sodium azide).
<b>Storage Instruction</b>	Store at 4°C.

**Note**

This product contains sodium azide: a POISONOUS AND HAZARDOUS SUBSTANCE which should be handled by trained staff only.

## Applications

- Immunohistochemistry (Formalin/PFA-fixed paraffin-embedded sections)

Immunohistochemical staining (Formalin-fixed paraffin-embedded sections) of human rhabdomyosarcoma with PAX7 monoclonal antibody, clone SPM613 (Cat # MAB13135).

## Gene Info — PAX7

Entrez GeneID [5081](#)

Protein Accession# [P23759](#)

Gene Name PAX7

Gene Alias HUP1, PAX7B

Gene Description paired box 7

Omim ID [167410 268220](#)

Gene Ontology [Hyperlink](#)

**Gene Summary** This gene is a member of the paired box (PAX) family of transcription factors. Members of this gene family typically contain a paired box domain, an octapeptide, and a paired-type homeodomain. These genes play critical roles during fetal development and cancer growth. The specific function of the paired box 7 gene is unknown but speculated to involve tumor suppression since fusion of this gene with a forkhead domain family member has been associated with alveolar rhabdomyosarcoma. Three transcript variants encoding different isoforms have been found for this gene. [provided by RefSeq]

**Other Designations** OTTHUMP00000002534|PAX7 transcriptional factor|paired box gene 7|paired box homeotic gene 7|paired domain gene 7

## Disease

- [Cleft Lip](#)
- [Cleft Palate](#)
- [Genetic Predisposition to Disease](#)

- [Narcolepsy](#)