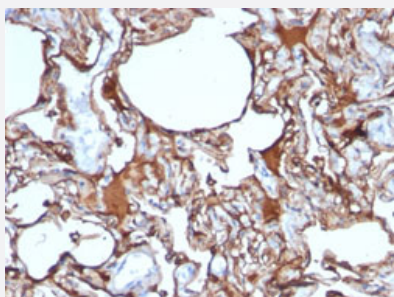


MCAM monoclonal antibody, clone SPM620

Catalog # MAB13106

Size 100 ug

Applications



Immunohistochemistry (Formalin/PFA-fixed paraffin-embedded sections)

Immunohistochemical staining (Formalin-fixed paraffin-embedded sections) of human melanoma with MCAM monoclonal antibody, clone SPM620 (Cat # MAB13106).

Specification

Product Description	Mouse monoclonal antibody raised against full length recombinant human MCAM.
Immunogen	Recombinant protein corresponding to full length human MCAM.
Host	Mouse
Theoretical MW (kDa)	130
Reactivity	Human
Form	Liquid
Purification	Protein A/G purification
Isotype	IgG1, kappa
Recommend Usage	Flow Cytometry (0.5-1 ug/10 ⁶ cells in 0.1 mL) Immunofluorescence (0.5-1 ug/mL) Immunohistochemistry (Formalin/PFA-fixed paraffin-embedded sections) (0.5-1 ug/mL) The optimal working dilution should be determined by the end user.
Storage Buffer	In 10 mM PBS.

Storage Instruction

Store at -20 to -80°C.
Aliquot to avoid repeated freezing and thawing.

Applications

- Immunohistochemistry (Formalin/PFA-fixed paraffin-embedded sections)

Immunohistochemical staining (Formalin-fixed paraffin-embedded sections) of human melanoma with MCAM monoclonal antibody, clone SPM620 (Cat # MAB13106).

- Immunofluorescence

- Flow Cytometry

Gene Info — MCAM

Entrez GeneID	4162
---------------	----------------------

Protein Accession#	P43121
--------------------	------------------------

Gene Name	MCAM
-----------	------

Gene Alias	CD146, MUC18
------------	--------------

Gene Description	melanoma cell adhesion molecule
------------------	---------------------------------

Omim ID	155735
---------	------------------------

Gene Ontology	Hyperlink
---------------	---------------------------

Other Designations	Gicerin melanoma adhesion molecule
--------------------	------------------------------------