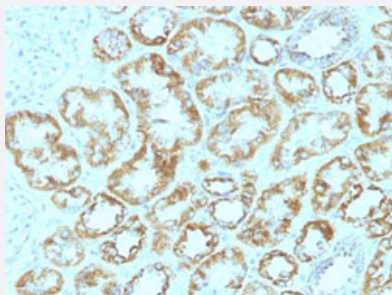


# Lamc1 monoclonal antibody, clone SPM193

Catalog # MAB13101      Size 100 ug

## Applications



### Immunohistochemistry (Formalin/PFA-fixed paraffin-embedded sections)

Immunohistochemical staining (Formalin-fixed paraffin-embedded sections) of human renal cell carcinoma with Lamc1 monoclonal antibody, clone SPM193 (Cat # MAB13101).

## Specification

**Product Description** Rat monoclonal antibody raised against native mouse Lamc1.

**Immunogen** Murine EHS laminin preparation.

**Host** Rat

**Theoretical MW (kDa)** 210

**Reactivity** Human, Mouse

**Form** Liquid

**Purification** Protein A/G purification

**Isotype** IgG2a, kappa

**Recommend Usage**  
 Flow Cytometry (0.5-1 ug/10<sup>6</sup> cells in 0.1 mL)  
 Immunofluorescence (1-2 ug/mL)  
 Immunohistochemistry (Formalin/PFA-fixed paraffin-embedded sections) (0.5-1 ug/mL)  
 The optimal working dilution should be determined by the end user.

**Storage Buffer** In 10 mM PBS (0.05% BSA, 0.05% sodium azide).

**Storage Instruction**

Store at 4°C.

**Note**

This product contains sodium azide: a POISONOUS AND HAZARDOUS SUBSTANCE which should be handled by trained staff only.

## Applications

- Immunohistochemistry (Formalin/PFA-fixed paraffin-embedded sections)

Immunohistochemical staining (Formalin-fixed paraffin-embedded sections) of human renal cell carcinoma with Lamc1 monoclonal antibody, clone SPM193 (Cat # MAB13101).

- Immunofluorescence

- Flow Cytometry

## Gene Info — Lamc1

**Entrez GeneID**[226519](#)**Protein Accession#**[P02468](#)**Gene Name**

Lamc1

**Gene Alias**

Lamb2

**Gene Description**

laminin, gamma 1

**Gene Ontology**[Hyperlink](#)**Gene Summary**

O

**Other Designations**

laminin B2