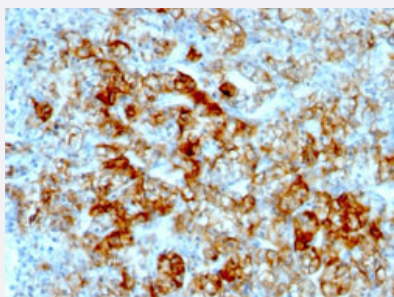


CDH16 monoclonal antibody, clone SPM594

Catalog # MAB13055 Size 100 ug

Applications



Immunohistochemistry (Formalin/PFA-fixed paraffin-embedded sections)

Immunohistochemical staining (Formalin-fixed paraffin-embedded sections) of human renal cell carcinoma using CDH16 monoclonal antibody, clone SPM594 (Cat # MAB13055).

Specification

Product Description	Mouse monoclonal antibody raised against full length recombinant human CDH16.
Immunogen	Recombinant protein corresponding to full length human CDH16.
Host	Mouse
Theoretical MW (kDa)	130
Reactivity	Human
Form	Liquid
Purification	Protein A/G purification
Isotype	IgG1, kappa
Recommend Usage	Flow Cytometry (0.5-1 ug/million cells in 0.1 mL) Immunofluorescence (1-2 ug/mL) Immunohistochemistry (Formalin/PFA-fixed paraffin-embedded sections) (0.5-1 ug/mL) The optimal working dilution should be determined by the end user.
Storage Buffer	In 10 mM PBS.

Storage Instruction

Store at -20 to -80°C.
Aliquot to avoid repeated freezing and thawing.

Applications

- Immunohistochemistry (Formalin/PFA-fixed paraffin-embedded sections)

Immunohistochemical staining (Formalin-fixed paraffin-embedded sections) of human renal cell carcinoma using CDH16 monoclonal antibody, clone SPM594 (Cat # MAB13055).

- Immunofluorescence
- Flow Cytometry

Gene Info — CDH16

Entrez GeneID [1014](#)

Protein Accession# [O75309](#)

Gene Name CDH16

Gene Alias -

Gene Description cadherin 16, KSP-cadherin

Omim ID [603118](#)

Gene Ontology [Hyperlink](#)

Gene Summary This gene is a member of the cadherin superfamily, genes encoding calcium-dependent, membrane-associated glycoproteins. Mapped to a previously identified cluster of cadherin genes on chromosome 16q22.1, the gene localizes with superfamily members CDH1, CDH3, CDH5, CDH8 and CDH11. The protein consists of an extracellular domain containing 6 cadherin domains, a trans membrane region and a truncated cytoplasmic domain but lacks the prosequence and tripeptide HAV adhesion recognition sequence typical of most classical cadherins. Expression is exclusively in kidney, where the protein functions as the principal mediator of homotypic cellular recognition, playing a role in the morphogenic direction of tissue development. [provided by RefSeq]

Other Designations KSP-cadherin|cadherin 16|kidney-specific cadherin