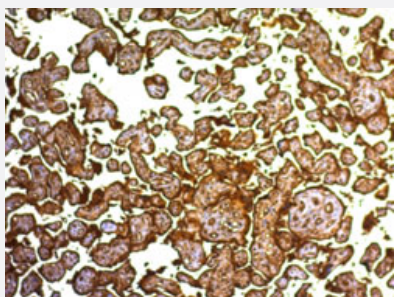


ALPP monoclonal antibody, clone SPM593

Catalog # MAB13053 Size 100 ug

Applications



Immunohistochemistry (Formalin/PFA-fixed paraffin-embedded sections)

Immunohistochemical staining (Formalin-fixed paraffin-embedded sections) of human placenta using ALPP monoclonal antibody, clone SPM593 (Cat # MAB13053).

Specification

Product Description	Mouse monoclonal antibody raised against full length recombinant human ALPP.
Immunogen	Recombinant protein corresponding to full length human ALPP.
Host	Mouse
Theoretical MW (kDa)	70
Reactivity	Human
Specificity	This antibody is highly specific for ALPP and shows no cross-reaction with other isozymes of alkaline phosphatase.
Form	Liquid
Purification	Protein A/G purification
Isotype	IgG2b, kappa
Recommend Usage	Flow Cytometry (0.5-1 ug/million cells in 0.1 mL) Immunofluorescence (0.5-1 ug/mL) Immunohistochemistry (Formalin/PFA-fixed paraffin-embedded sections) (0.25-0.5 ug/mL) The optimal working dilution should be determined by the end user.

Storage Buffer	In 10 mM PBS.
----------------	---------------

Storage Instruction	Store at -20 to -80°C. Aliquot to avoid repeated freezing and thawing.
---------------------	---

Applications

- Immunohistochemistry (Formalin/PFA-fixed paraffin-embedded sections)

Immunohistochemical staining (Formalin-fixed paraffin-embedded sections) of human placenta using ALPP monoclonal antibody, clone SPM593 (Cat # MAB13053).

- Immunofluorescence

- Flow Cytometry

Gene Info — ALPP

Entrez GeneID	250
---------------	---------------------

Protein Accession#	P05187
--------------------	------------------------

Gene Name	ALPP
-----------	------

Gene Alias	ALP, FLJ61142, PALP, PLAP
------------	---------------------------

Gene Description	alkaline phosphatase, placental (Regan isozyme)
------------------	---

Omim ID	171800
---------	------------------------

Gene Ontology	Hyperlink
---------------	---------------------------

Gene Summary	<p>There are at least four distinct but related alkaline phosphatases: intestinal, placental, placental-like, and liver/bone/kidney (tissue non-specific). The first three are located together on chromosome 2 while the tissue non-specific form is located on chromosome 1. The product of this gene is a membrane bound glycosylated enzyme, also referred to as the heat stable form, that is expressed primarily in the placenta although it is closely related to the intestinal form of the enzyme as well as to the placental-like form. The coding sequence for this form of alkaline phosphatase is unique in that the 3' untranslated region contains multiple copies of an Alu family repeat. In addition, this gene is polymorphic and three common alleles (type 1, type 2 and type 3) for this form of alkaline phosphatase have been well characterized. [provided by RefSeq]</p>
--------------	--

Other Designations	alkaline phosphomonoesterase glycerophosphatase placental alkaline phosphatase
--------------------	--

Pathway

- [Folate biosynthesis](#)
- [gamma-Hexachlorocyclohexane degradation](#)
- [Metabolic pathways](#)

Disease

- [Birth Weight](#)
- [Fetal Death](#)