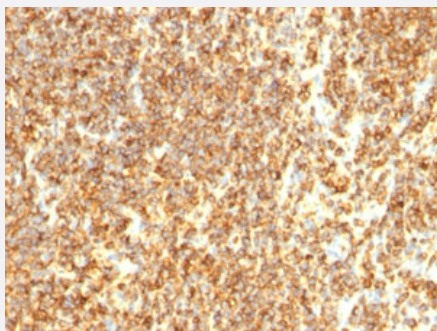


# MS4A1 monoclonal antibody, clone SPM494

Catalog # MAB13019      Size 500 uL

## Applications



### Immunohistochemistry (Formalin/PFA-fixed paraffin-embedded sections)

Immunohistochemical staining (Formalin-fixed paraffin-embedded sections) of human lymphoma with MS4A1 monoclonal antibody, clone SPM494 (Cat # MAB13019).

## Specification

<b>Product Description</b>	Mouse monoclonal antibody raised against native human MS4A1.
<b>Immunogen</b>	Human tonsil B cells.
<b>Host</b>	Mouse
<b>Theoretical MW (kDa)</b>	30-33
<b>Reactivity</b>	Human
<b>Form</b>	Liquid
<b>Isotype</b>	IgG2a, kappa
<b>Recommend Usage</b>	Flow Cytometry (2-5 uL/million cells in 0.1 mL) Immunofluorescence (1:100-1:200) Immunohistochemistry (Formalin/PFA-fixed paraffin-embedded sections) (1:100-1:200) The optimal working dilution should be determined by the end user.
<b>Storage Buffer</b>	In tissue culture supernatant (0.05% sodium azide).
<b>Storage Instruction</b>	Store at 4°C.

**Note**

This product contains sodium azide: a POISONOUS AND HAZARDOUS SUBSTANCE which should be handled by trained staff only.

## Applications

- Immunohistochemistry (Formalin/PFA-fixed paraffin-embedded sections)

Immunohistochemical staining (Formalin-fixed paraffin-embedded sections) of human lymphoma with MS4A1 monoclonal antibody, clone SPM494 (Cat # MAB13019).

- Immunofluorescence
- Flow Cytometry

## Gene Info — MS4A1

**Entrez GeneID** [931](#)

**Protein Accession#** [P11836](#)

**Gene Name** MS4A1

**Gene Alias** B1, Bp35, CD20, LEU-16, MGC3969, MS4A2, S7

**Gene Description** membrane-spanning 4-domains, subfamily A, member 1

**Omim ID** [112210](#)

**Gene Ontology** [Hyperlink](#)

**Gene Summary** This gene encodes a member of the membrane-spanning 4A gene family. Members of this nascent protein family are characterized by common structural features and similar intron/exon splice boundaries and display unique expression patterns among hematopoietic cells and nonlymphoid tissues. This gene encodes a B-lymphocyte surface molecule which plays a role in the development and differentiation of B-cells into plasma cells. This family member is localized to 11q12, among a cluster of family members. Alternative splicing of this gene results in two transcript variants which encode the same protein. [provided by RefSeq]

**Other Designations** B-lymphocyte cell-surface antigen B1|CD20 antigen|CD20 receptor

## Pathway

- [Hematopoietic cell lineage](#)

## Disease

- [Breast cancer](#)
- [Breast Neoplasms](#)
- [Genetic Predisposition to Disease](#)
- [Lymphoma](#)
- [Neoplasm Recurrence](#)
- [Ovarian cancer](#)