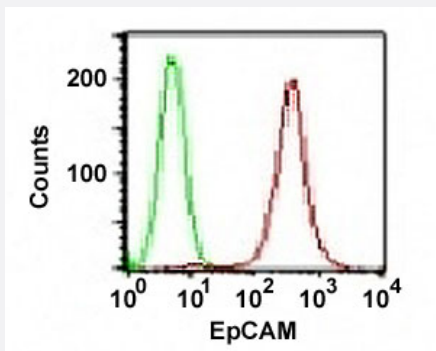


# EPCAM monoclonal antibody, clone SPM134 (PE)

Catalog # MAB13017      Size 100 Reactions

## Applications



### Flow Cytometry

Flow cytometric analysis of HT-29 cell with EPCAM monoclonal antibody, clone SPM134 (PE) (Cat # MAB13017) (red). Black: cells alone. Green: isotype control.

## Specification

<b>Product Description</b>	Mouse monoclonal antibody raised against native human EPCAM.
<b>Immunogen</b>	Small cell lung carcinoma cells.
<b>Host</b>	Mouse
<b>Reactivity</b>	Human
<b>Form</b>	Liquid
<b>Conjugation</b>	PE
<b>Purification</b>	Protein A/G purification
<b>Isotype</b>	IgG1, kappa
<b>Recommend Usage</b>	Flow Cytometry (0.5-1 ug/million cells in 0.1 mL) Immunofluorescence (1-2 ug/mL) The optimal working dilution should be determined by the end user.
<b>Storage Buffer</b>	In PBS (0.05% BSA, 0.05% sodium azide).

## Storage Instruction

Store at 4°C.

## Note

This product contains sodium azide: a POISONOUS AND HAZARDOUS SUBSTANCE which should be handled by trained staff only.

## Applications

- Immunofluorescence
- Flow Cytometry

Flow cytometric analysis of HT-29 cell with EPCAM monoclonal antibody, clone SPM134 (PE) (Cat # MAB13017) (red). Black: cells alone. Green: isotype control.

## Gene Info — EPCAM

## Entrez GeneID

[4072](#)

## Protein Accession#

[P16422](#)

## Gene Name

EPCAM

## Gene Alias

17-1A, 323/A3, CD326, CO-17A, CO17-1A, EGP, EGP-2, EGP34, EGP40, ESA, Ep-CAM, GA733-2, HEA125, KS1/4, KSA, M4S1, MH99, MIC18, MK-1, MOC31, TACST-1, TACSTD1, TROP1, hEGP-2

## Gene Description

epithelial cell adhesion molecule

## Omim ID

[185535](#)

## Gene Ontology

[Hyperlink](#)

## Gene Summary

This gene encodes a carcinoma-associated antigen and is a member of a family that includes at least two type I membrane proteins. This antigen is expressed on most normal epithelial cells and gastrointestinal carcinomas and functions as a homotypic calcium-independent cell adhesion molecule. The antigen is being used as a target for immunotherapy treatment of human carcinomas. Mutations in this gene result in congenital tufting enteropathy. [provided by RefSeq]

## Other Designations

adenocarcinoma-associated antigen|carcinoma-associated antigen GA733-2|human epithelial glycoprotein-2|membrane component, chromosome 4, surface marker (35kD glycoprotein)|tumor-associated calcium signal transducer 1

## Disease

- [Genetic Predisposition to Disease](#)
- [Ovarian Neoplasms](#)