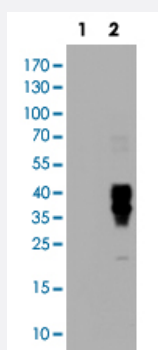


# BTLA monoclonal antibody, clone 4C2

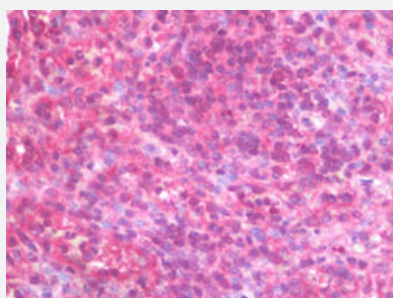
Catalog # MAB12997      Size 50 uL

## Applications



### Western Blot (Transfected lysate)

Western Blot analysis of HEK293T cells transfected with the Lane 1: pCMV6-ENTRY control and Lane 2: pCMV6-ENTRY BTLA cDNA for 48 hrs (5 ug/lane) using BTLA monoclonal antibody, clone 4C2 (Cat # MAB12997).



### Immunohistochemistry (Formalin/PFA-fixed paraffin-embedded sections)

Immunohistochemical staining (Formalin-fixed paraffin-embedded sections) of human spleen with BTLA monoclonal antibody, clone 4C2 (Cat # MAB12997) at 10 ug/mL working concentration.

## Specification

Product Description	Mouse monoclonal antibody raised against full length recombinant human BTLA.
Immunogen	Recombinant protein corresponding to full length human BTLA.
Host	Mouse
Reactivity	Human
Form	Liquid
Purification	Protein A/G purification
Isotype	IgG2b

<b>Recommend Usage</b>	Immunohistochemistry (Formalin/PFA-fixed paraffin-embedded sections) (10 ug/mL) Western Blot (1:2000) The optimal working dilution should be determined by the end user.
<b>Storage Buffer</b>	In PBS, pH 7.3 (50% glycerol, 1% BSA, 0.02% sodium azide).
<b>Storage Instruction</b>	Store at -20°C. Aliquot to avoid repeated freezing and thawing.
<b>Note</b>	This product contains sodium azide: a POISONOUS AND HAZARDOUS SUBSTANCE which should be handled by trained staff only.

## Applications

- Western Blot (Transfected lysate)

Western Blot analysis of HEK293T cells transfected with the Lane 1: pCMV6-ENTRY control and Lane 2: pCMV6-ENTRY BTLA cDNA for 48 hrs (5 ug/lane) using BTLA monoclonal antibody, clone 4C2 (Cat # MAB12997).

- Immunohistochemistry (Formalin/PFA-fixed paraffin-embedded sections)

Immunohistochemical staining (Formalin-fixed paraffin-embedded sections) of human spleen with BTLA monoclonal antibody, clone 4C2 (Cat # MAB12997) at 10 ug/mL working concentration.

## Gene Info — BTLA

<b>Entrez GeneID</b>	<a href="#">151888</a>
<b>Protein Accession#</b>	<a href="#">Q7Z6A9</a>
<b>Gene Name</b>	BTLA
<b>Gene Alias</b>	BTLA1, CD272, FLJ16065, MGC129743
<b>Gene Description</b>	B and T lymphocyte associated
<b>Omim ID</b>	<a href="#">607925</a>
<b>Gene Ontology</b>	<a href="#">Hyperlink</a>
<b>Gene Summary</b>	BTLA expression is induced during activation of T cells, and BTLA remains expressed on Th1 cells but not Th2 cells. Like PD1 (MIM 600244) and CTLA4 (MIM 123890), BTLA interacts with a B7 homolog, B7H4.[supplied by OMIM]
<b>Other Designations</b>	B and T lymphocyte attenuator

## Disease

- [Arthritis](#)
- [Breast cancer](#)
- [Breast Neoplasms](#)
- [Diabetes Mellitus](#)
- [Genetic Predisposition to Disease](#)
- [Hepatitis C](#)
- [Lupus Erythematosus](#)