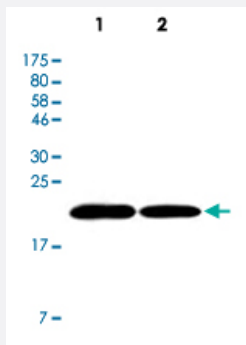


FTH1 monoclonal antibody, clone 3F8

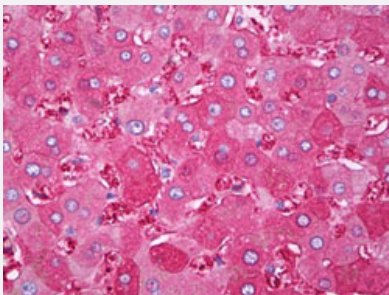
Catalog # MAB12985 Size 50 uL

Applications



Western Blot (Cell lysate)

Western Blot analysis of Lane 1: U87 mg cell lysate and Lane 2: HeLa cell lysate with FTH1 monoclonal antibody, clone 3F8 (Cat # MAB12985).



Immunohistochemistry (Formalin/PFA-fixed paraffin-embedded sections)

Immunohistochemical staining (Formalin-fixed paraffin-embedded sections) of human liver with FTH1 monoclonal antibody, clone 3F8 (Cat # MAB12985) at 1:200 dilution.

Specification

| | |
|----------------------------|--|
| Product Description | Mouse monoclonal antibody raised against recombinant human FTH1. |
| Immunogen | Recombinant His fusion protein corresponding to human FTH1. |
| Host | Mouse |
| Reactivity | Human |
| Form | Liquid |
| Purification | Ammonium sulfate precipitation |
| Isotype | IgG2a, kappa |

| | |
|----------------------------|--|
| Recommend Usage | ELISA Immunohistochemistry (Formalin/PFA-fixed paraffin-embedded sections) (1:200) Western Blot (1:1000) The optimal working dilution should be determined by the end user. |
| Storage Buffer | In HEPES, 0.15 M NaCl (50% glycerol, 0.01% BSA, 0.03% sodium azide). |
| Storage Instruction | Store at 4°C. For long term storage store at -20°C. Aliquot to avoid repeated freezing and thawing. |
| Note | This product contains sodium azide: a POISONOUS AND HAZARDOUS SUBSTANCE which should be handled by trained staff only. |

Applications

- Western Blot (Cell lysate)

Western Blot analysis of Lane 1: U87 mg cell lysate and Lane 2: HeLa cell lysate with FTH1 monoclonal antibody, clone 3F8 (Cat # MAB12985).

- Immunohistochemistry (Formalin/PFA-fixed paraffin-embedded sections)

Immunohistochemical staining (Formalin-fixed paraffin-embedded sections) of human liver with FTH1 monoclonal antibody, clone 3F8 (Cat # MAB12985) at 1:200 dilution.

- Enzyme-linked Immunoabsorbent Assay

Gene Info — FTH1

| | |
|---------------------------|---|
| Entrez GeneID | 2495 |
| Protein Accession# | P02794 |
| Gene Name | FTH1 |
| Gene Alias | FHC, FTH, FTHL6, MGC104426, PIG15, PLIF |
| Gene Description | ferritin, heavy polypeptide 1 |
| Omim ID | 134770 |
| Gene Ontology | Hyperlink |

Gene Summary

This gene encodes the heavy subunit of ferritin, the major intracellular iron storage protein in prokaryotes and eukaryotes. It is composed of 24 subunits of the heavy and light ferritin chains. Variation in ferritin subunit composition may affect the rates of iron uptake and release in different tissues. A major function of ferritin is the storage of iron in a soluble and nontoxic state. Defects in ferritin proteins are associated with several neurodegenerative diseases. This gene has multiple pseudogenes. Several alternatively spliced transcript variants have been observed, but their biological validity has not been determined. [provided by RefSeq]

Other Designations

apoferritin|placenta immunoregulatory factor|proliferation-inducing protein 15

Pathway

- [Porphyrin and chlorophyll metabolism](#)

Disease

- [Parkinson disease](#)