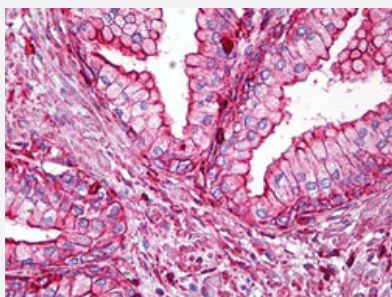


# ACTB monoclonal antibody, clone BA3R

Catalog # MAB12983      Size 50 ug

## Applications



### Immunohistochemistry (Formalin/PFA-fixed paraffin-embedded sections)

Immunohistochemical staining (Formalin-fixed paraffin-embedded sections) of human prostate with ACTB monoclonal antibody, clone BA3R (Cat # MAB12983) at 5 ug/mL working concentration.

## Specification

<b>Product Description</b>	Mouse monoclonal antibody raised against synthetic peptide of human ACTB.
<b>Immunogen</b>	A synthetic peptide (conjugated with KLH) corresponding to N-terminus region of human ACTB.
<b>Host</b>	Mouse
<b>Theoretical MW (kDa)</b>	40
<b>Reactivity</b>	Human
<b>Form</b>	Liquid
<b>Purification</b>	Affinity purification
<b>Isotype</b>	IgG2b
<b>Recommend Usage</b>	ELISA Immunohistochemistry (Formalin/PFA-fixed paraffin-embedded sections) (5 ug/mL) Western Blot (1:1000-1:10000) The optimal working dilution should be determined by the end user.
<b>Storage Buffer</b>	In PBS, pH 7.4 (0.05% sodium azide).

**Storage Instruction**

Store at 4°C. For long term storage store at -20°C.  
Aliquot to avoid repeated freezing and thawing.

**Note**

This product contains sodium azide: a POISONOUS AND HAZARDOUS SUBSTANCE which should be handled by trained staff only.

## Applications

- Western Blot
- Immunohistochemistry (Formalin/PFA-fixed paraffin-embedded sections)  
Immunohistochemical staining (Formalin-fixed paraffin-embedded sections) of human prostate with ACTB monoclonal antibody, clone BA3R (Cat # MAB12983) at 5 ug/mL working concentration.
- Enzyme-linked Immunoabsorbent Assay

## Gene Info — ACTB

**Entrez GeneID**[60](#)**Protein Accession#**[P60709](#)**Gene Name**

ACTB

**Gene Alias**

PS1TP5BP1

**Gene Description**

actin, beta

**Omim ID**[102630](#)**Gene Ontology**[Hyperlink](#)**Gene Summary**

This gene encodes one of six different actin proteins. Actins are highly conserved proteins that are involved in cell motility, structure, and integrity. This actin is a major constituent of the contractile apparatus and one of the two nonmuscle cytoskeletal actins. [provided by RefSeq]

**Other Designations**

PS1TP5-binding protein 1|actin, cytoplasmic 1|beta actin|beta cytoskeletal actin

## Publication Reference

- [p38 predicts depression and poor outcome in esophageal cancer.](#)

Cheng Y, Qiao Z, Dang C, Zhou B, Li S, Zhang W, Jiang J, Song Y, Zhang J, Diao D.

Oncology Letters 2017 Dec; 4(6):7241.

Application: WB-Ce, Human, Eca-109, TE-1 cells

## Pathway

- [Adherens junction](#)
- [Arrhythmogenic right ventricular cardiomyopathy \(ARVC\)](#)
- [Focal adhesion](#)
- [Hypertrophic cardiomyopathy \(HCM\)](#)
- [Leukocyte transendothelial migration](#)
- [Pathogenic Escherichia coli infection - EHEC](#)
- [Regulation of actin cytoskeleton](#)
- [Tight junction](#)
- [Vibrio cholerae infection](#)

## Disease

- [Breast cancer](#)
- [Breast Neoplasms](#)