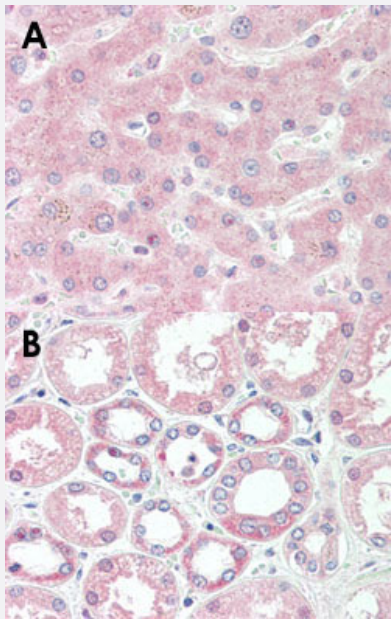


SOD1 monoclonal antibody, clone 2F5

Catalog # MAB12978 Size 50 ug

Applications



Immunohistochemistry (Formalin/PFA-fixed paraffin-embedded sections)

Immunohistochemical staining (Formalin-fixed paraffin-embedded sections) of human liver (A) and human kidney (B) with SOD1 monoclonal antibody, clone 2F5 (Cat # MAB12978).

Specification

Product Description	Mouse monoclonal antibody raised against bovine SOD1.
Immunogen	Bovine erythrocytes.
Host	Mouse
Reactivity	Bovine, Human
Form	Liquid
Purification	Protein G purification
Isotype	IgG1

Recommend Usage	ELISA Immunohistochemistry (Frozen sections) Immunohistochemistry (Formalin/PFA-fixed paraffin-embedded sections) (15 ug/mL) The optimal working dilution should be determined by the end user.
Storage Buffer	In PBS (0.1% BSA, 0.09% sodium azide).
Storage Instruction	Store at 4°C. For long term storage store at -20°C. Aliquot to avoid repeated freezing and thawing.
Note	This product contains sodium azide: a POISONOUS AND HAZARDOUS SUBSTANCE which should be handled by trained staff only.

Applications

- Immunohistochemistry (Formalin/PFA-fixed paraffin-embedded sections)

Immunohistochemical staining (Formalin-fixed paraffin-embedded sections) of human liver (A) and human kidney (B) with SOD1 monoclonal antibody, clone 2F5 (Cat # MAB12978).

- Immunohistochemistry (Frozen sections)
- Enzyme-linked Immunoabsorbent Assay

Gene Info — SOD1

Entrez GeneID	281495
Gene Name	SOD1
Gene Alias	SOD1L1
Gene Description	superoxide dismutase 1, soluble
Gene Ontology	Hyperlink
Gene Summary	Cu-Zn superoxide dismutase superoxide dismutase 1
Other Designations	Cu-Zn superoxide dismutase superoxide dismutase 1, soluble-like