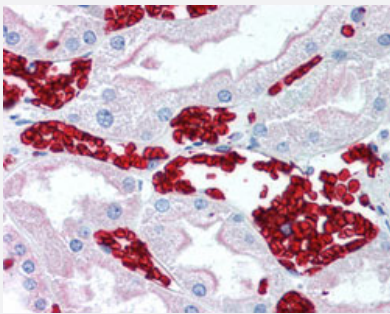


GYPA/GYPB monoclonal antibody, clone HIR2

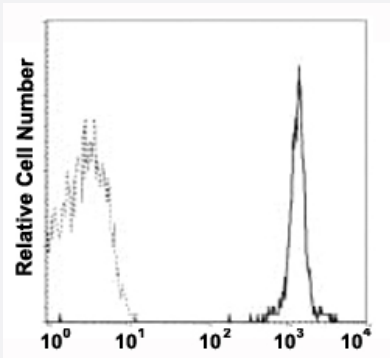
Catalog # MAB12957 Size 50 ug

Applications



Immunohistochemistry (Formalin/PFA-fixed paraffin-embedded sections)

Immunohistochemical staining (Formalin-fixed paraffin-embedded sections) of human kidney, red blood cells with GYPA/GYPB monoclonal antibody, clone HIR2 (Cat # MAB12957) at 1:50 dilution.



Flow Cytometry

Flow cytometric analysis of human red blood cells with GYPA/GYPB monoclonal antibody, clone HIR2 (Cat # MAB12957).

Specification

Product Description	Mouse monoclonal antibody raised against human GYPA/GYPB.
Immunogen	Human peripheral blood mononuclear cell (PBMC).
Host	Mouse
Reactivity	Human
Form	Liquid
Purification	Protein G purification

Isotype	IgG2b
Recommend Usage	Flow Cytometry Immunohistochemistry (Formalin/PFA-fixed paraffin-embedded sections) (1:50) The optimal working dilution should be determined by the end user.
Storage Buffer	In PBS, pH 7.2 (0.09% sodium azide).
Storage Instruction	Store at 4°C. Aliquot to avoid repeated freezing and thawing.
Note	This product contains sodium azide: a POISONOUS AND HAZARDOUS SUBSTANCE which should be handled by trained staff only.

Applications

- Immunohistochemistry (Formalin/PFA-fixed paraffin-embedded sections)

Immunohistochemical staining (Formalin-fixed paraffin-embedded sections) of human kidney, red blood cells with GYPA/GYPB monoclonal antibody, clone HIR2 (Cat # MAB12957) at 1:50 dilution.

- Flow Cytometry

Flow cytometric analysis of human red blood cells with GYPA/GYPB monoclonal antibody, clone HIR2 (Cat # MAB12957).

Gene Info — GYPA

Entrez GeneID	2993
Gene Name	GYPA
Gene Alias	CD235a, GPA, GP _E rik, GPSAT, GpMiIII, HGpMiIII, HGpMiV, HGpMiX, HGpMiXI, HGpSta(C), MN, MNS
Gene Description	glycophorin A (MNS blood group)
Omim ID	111300 611162
Gene Ontology	Hyperlink
Gene Summary	Glycophorins A (GYPA) and B (GYPB) are major sialoglycoproteins of the human erythrocyte membrane which bear the antigenic determinants for the MN and Ss blood groups. In addition to the M or N and S or s antigens that commonly occur in all populations, about 40 related variant phenotypes have been identified. These variants include all the variants of the Miltenberger complex and several isoforms of Sta, as well as Dantu, Sat, He, Mg, and deletion variants Ena, S-s-U- and Mk. Most of the variants are the result of gene recombinations between GYPA and GYPB. [provided by RefSeq]

Other Designations

Mi.V glycoprotein (24 AA)|erythroid-lineage-specific membrane sialoglycoprotein|glycophorin A|glycophorin A (MN blood group)|glycophorin A MNS blood group|glycophorin A, GPA|glycophorin E rik|glycophorin Mi|glycophorin MiIII|glycophorin MiV|glycophorin Mi

Gene Info — GYPB

Entrez GeneID

[2994](#)

Gene Name

GYPB

Gene Alias

CD235b, GPB, GPB.NY, GYPHe.NY, HGpMiVI, MNS, SS

Gene Description

glycophorin B (MNS blood group)

Omim ID

[111740](#)

Gene Ontology

[Hyperlink](#)

Gene Summary

Glycophorins A (GYPA) and B (GYPB) are major sialoglycoproteins of the human erythrocyte membrane which bear the antigenic determinants for the MN and Ss blood groups. GYPB gene consists of 5 exons and has 97% sequence homology with GYPA from the 5' UTR to the coding sequence encoding the first 45 amino acids. In addition to the M or N and S or s antigens, that commonly occur in all populations, about 40 related variant phenotypes have been identified. These variants include all the variants of the Miltenberger complex and several isoforms of Sta; also, Dantu, Sat, He, Mg, and deletion variants Ena, S-s-U- and Mk. Most of the variants are the result of gene recombinations between GYPA and GYPB. [provided by RefSeq]

Other Designations

Ss blood group|glycophorin B|glycophorin HeP2|glycophorin MiVI

Pathway

- [Hematopoietic cell lineage](#)

Disease

- [Asthma](#)
- [Crohn Disease](#)
- [Genetic Predisposition to Disease](#)
- [Genetic Predisposition to Disease](#)
- [Malaria](#)

- [Malaria](#)