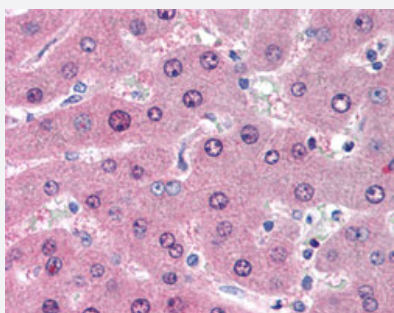


# LIME1 monoclonal antibody, clone LIME-10

Catalog # MAB12944      Size 50 ug

## Applications



### Immunohistochemistry (Formalin/PFA-fixed paraffin-embedded sections)

Immunohistochemical staining (Formalin-fixed paraffin-embedded sections) of human liver with LIME1 monoclonal antibody, clone LIME-10 (Cat # MAB12944) at 10 ug/mL working concentration.

## Specification

<b>Product Description</b>	Mouse monoclonal antibody raised against synthetic peptide of human LIME1.
<b>Immunogen</b>	A synthetic peptide (conjugated with KLH) corresponding to amino acids 281-296 at C-terminus region of human LIME1.
<b>Host</b>	Mouse
<b>Reactivity</b>	Human
<b>Form</b>	Liquid
<b>Purification</b>	Protein A purification
<b>Isotype</b>	IgG2a
<b>Recommend Usage</b>	Immunohistochemistry (Formalin/PFA-fixed paraffin-embedded sections) (10 ug/mL) Western Blot The optimal working dilution should be determined by the end user.
<b>Storage Buffer</b>	In PBS, pH 7.4 (0.09% sodium azide).
<b>Storage Instruction</b>	Store at 4°C. For long term storage store at -20°C. Aliquot to avoid repeated freezing and thawing.

**Note**

This product contains sodium azide: a POISONOUS AND HAZARDOUS SUBSTANCE which should be handled by trained staff only.

## Applications

- Western Blot
- Immunohistochemistry (Formalin/PFA-fixed paraffin-embedded sections)

Immunohistochemical staining (Formalin-fixed paraffin-embedded sections) of human liver with LIME1 monoclonal antibody, clone LIME-10 (Cat # MAB12944) at 10 ug/mL working concentration.

## Gene Info — LIME1

**Entrez GeneID** [54923](#)

**Protein Accession#** [Q9H400](#)

**Gene Name** LIME1

**Gene Alias** FLJ20406, LIME, LP8067, dJ583P15.4

**Gene Description** Lck interacting transmembrane adaptor 1

**Omim ID** [609809](#)

**Gene Ontology** [Hyperlink](#)

**Gene Summary** LIME1 is a raft-associated transmembrane adaptor phosphoprotein that is preferentially expressed in hemopoietic cells, particularly T cells (Brdickova et al., 2003 [PubMed 14610046]; Hur et al., 2003 [PubMed 14610044]).[supplied by OMIM]

**Other Designations** OTTHUMP00000031598